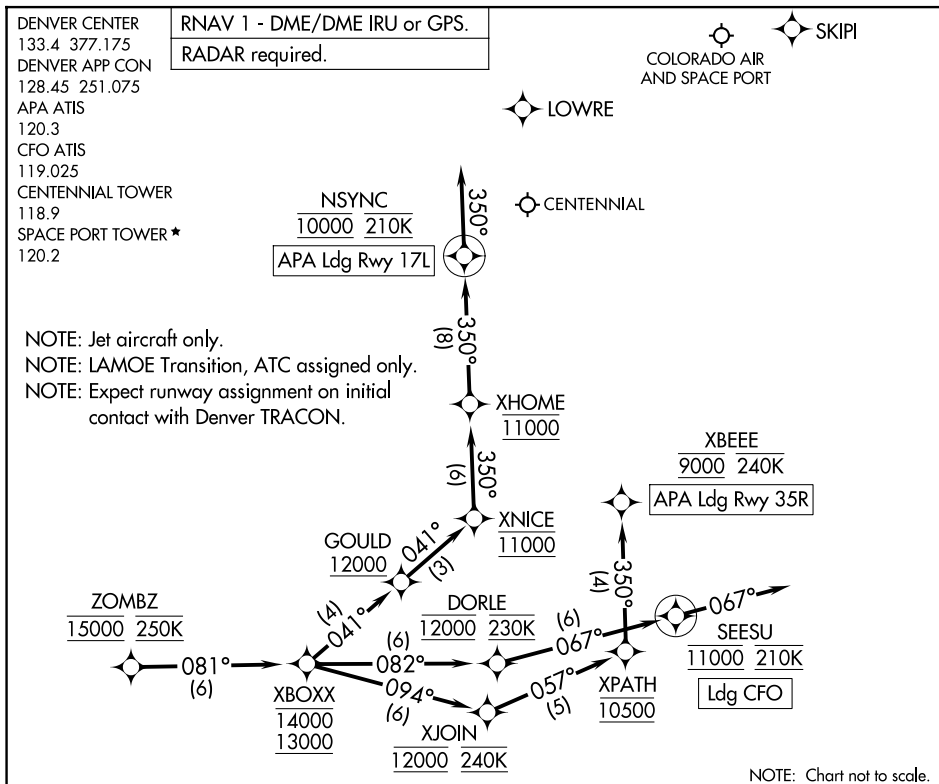


## ZOMBZ SIX ARRIVAL (RNAV) Arrival Routes

DENVER, COLORADO



## ARRIVAL ROUTE DESCRIPTION

**LANDING APA RUNWAY 17L:** From ZOMBZ on track 081° to cross XBOXX between 13000 and 14000, then on track 041° to cross GOULD at or above 12000, then on track 041° to cross XNICE at 11000, then on track 350° to cross XHOME at 11000, then on track 350° to cross NSYNC at 10000 and at 210K, then on track 350°. Expect RADAR vectors to final approach course.

**LANDING APA RUNWAY 35R:** From ZOMBZ on track 081° to cross XBOXX between 13000 and 14000, then on track 094° to cross XJOIN at 12000 and at 240K, then on track 057° to cross XPATH at 10500, then on track 350° to cross XBEEE at 9000 and at or below 240K. Expect ILS or RNAV RWY 35R approach.

**LANDING CFO:** From ZOMBZ on track 081° to cross XBOXX between 13000 and 14000, then on track 082° to cross DORLE at 12000 and at 230K, then on track 067° to cross SEESU at 11000 and at 210K, then on track 067° . Expect RADAR vectors to final approach course.

## LOST COMMUNICATIONS

In the event of lost communications prior to runway transition assignment, when APA is landing north, proceed on the ILS RWY 35R approach, when APA is landing south, proceed on the RNAV (GPS) RWY 17L from LOWRE.

LANDING CFO: proceed on the ILS RWY 26 approach from SKIPI.