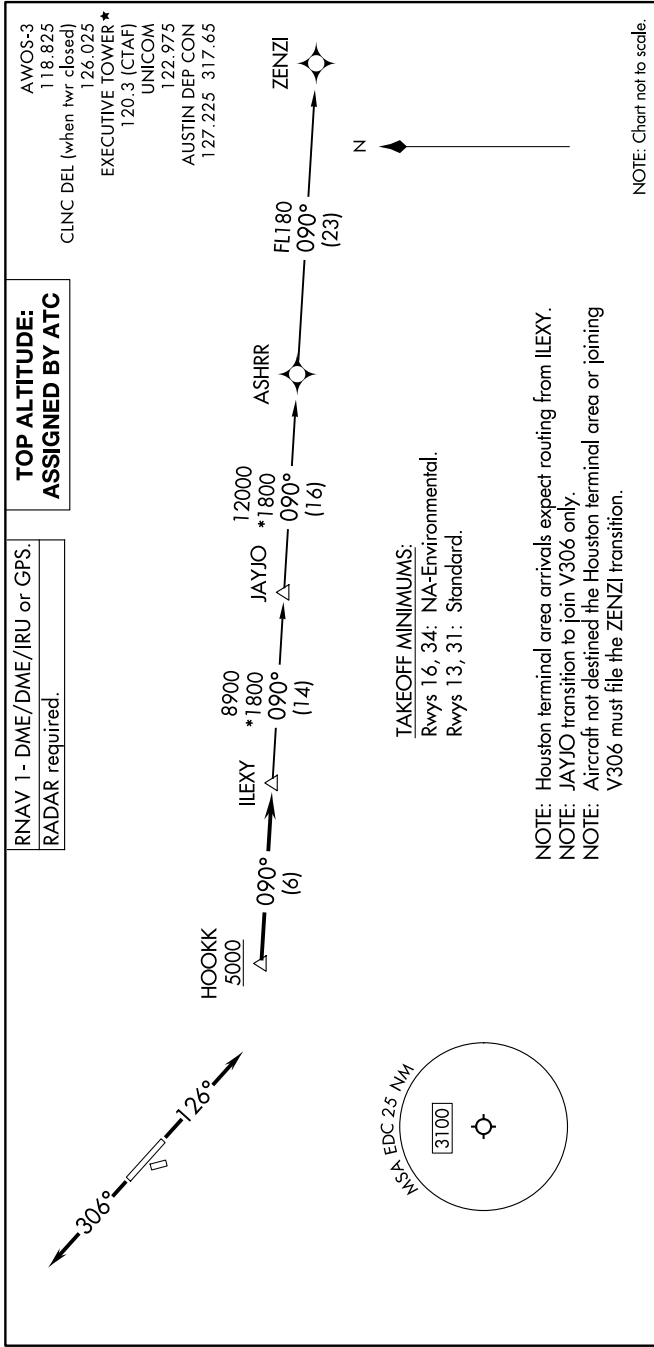


# ILEXY FOUR DEPARTURE (RNAV)

SC-3, 22 JAN 2026 to 19 FEB 2026



**TAKEOFF MINIMUMS:**  
Rwys 16, 34: NA-Environmental.  
Rwys 13, 31: Standard.

**NOTE:** Houston terminal area arrivals expect routing from ILEXY.  
**NOTE:** JAYJO transition to join V306 only.  
**NOTE:** Aircraft not destined the Houston terminal area or joining V306 must file the ZENZI transition.

NOTE: Chart not to scale.

## DEPARTURE ROUTE DESCRIPTION

**TAKEOFF RUNWAY 13:** Climb on heading 126° or as assigned by ATC for vectors to cross HOOKK at or above 5000, thence. . . .  
**TAKEOFF RUNWAY 31:** Climb on heading 306° or as assigned by ATC for vectors to cross HOOKK at or above 5000, thence. . . .

. . . on track 090° to ILEXY, then on transition. Maintain altitude assigned by ATC. Expect filed altitude 10 minutes after departure.

JAYJO TRANSITION (ILEXY4.JAYJO)  
ZENZI TRANSITION (ILEXY4.ZENZI)

# ILEXY FOUR DEPARTURE (RNAV)

SC-3, 22 JAN 2026 to 19 FEB 2026