

RNAV (GPS) RWY 36

SHELBY COUNTY (2H(0))

APP CRS	Rwy Ldg	4098
002°	TDZE	619
	Apt Elev	619

RNP APCH - GPS.

NA Circling NA to Rwy 4, 14, 22, and 32. Use Decatur altimeter setting, when not received use Mattoon/Charleston altimeter setting and increase all MDAs 20 feet, and Circling Cat C visibility ¼ SM. Rwy 36 helicopter visibility reduction below 1 SM NA. Straight-in and Circling Rwy 36 NA at night.

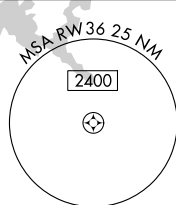
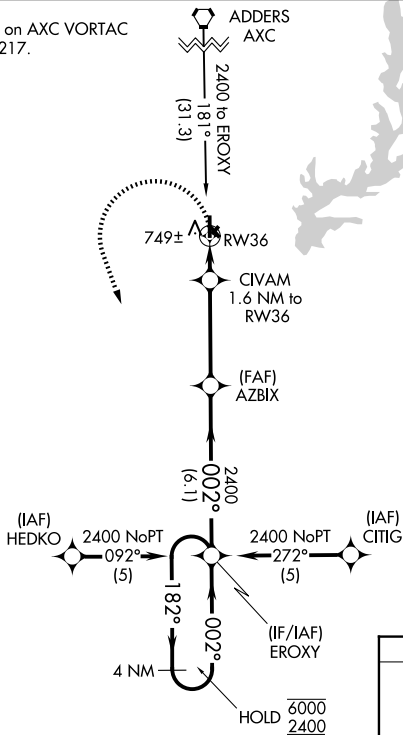
MISSED APPROACH:
Climbing left turn to 2400 direct EROXY and hold.

DEC ASOS
126.35

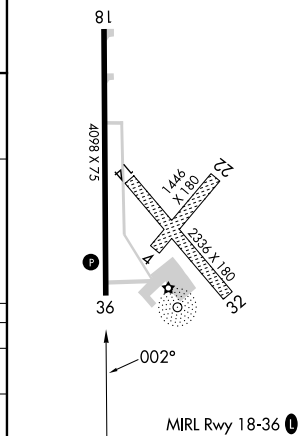
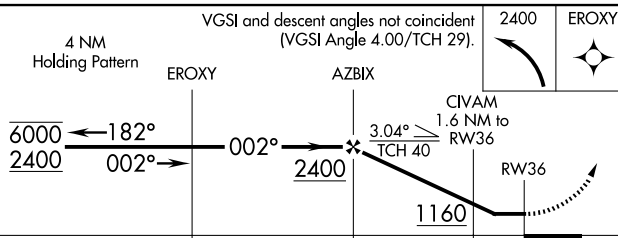
KANSAS CITY CENTER
124.3 269.15

UNICOM
122.8 (CTAF)

Procedure NA for arrival on AXC VORTAC airway radials 098 CW 217.



ELEV 619	TDZE 619
----------	----------



CATEGORY	A	B	C	D
LNVA MDA	1080-1	461 (500-1)	1080-1 3/8 461 (500-1 3/8)	NA
CIRCLING	1280-1	661 (700-1)	1340-2 721 (800-2)	NA