

BOTCH ONE DEPARTURE (RNAV)

WEATHERFORD, TEXAS

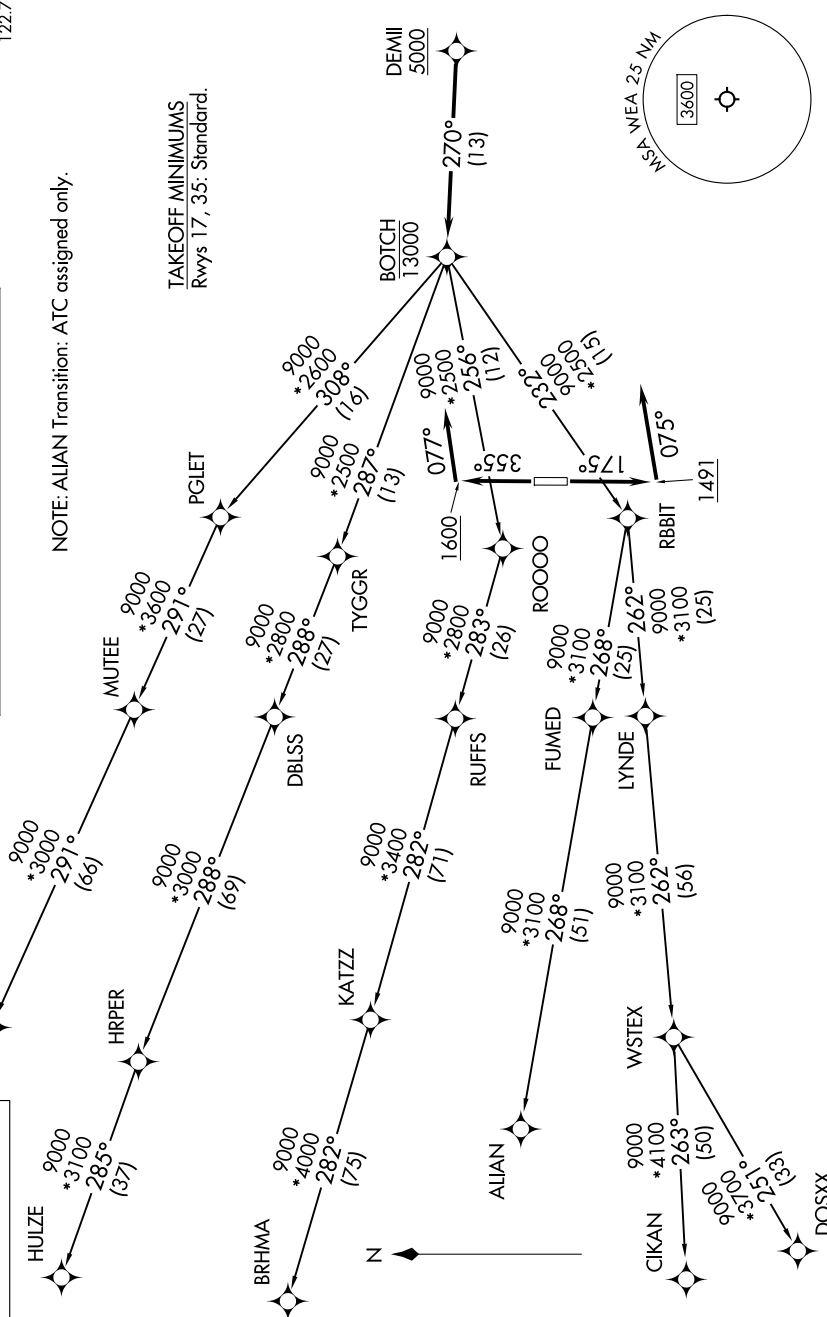
SC-2, 22 JAN 2026 to 19 FEB 2026

TOP ALTITUDE: ASSIGNED BY ATC	RNAV 1 - DME/DME/IRU or GPS required.
	RADAR required for non-GPS equipped aircraft.

LONE STAR DEP CON
135.975 379.9
CTAF
122.7

NOTE: ALIAN Transition: ATC assigned only.

TAKEOFF MINIMUMS
Rwys 17, 35: Standard.



(CONTINUED ON FOLLOWING PAGE)

NOTE: Chart not to scale.

BOTCH ONE DEPARTURE (RNAV)

WEATHERFORD, TEXAS

SC-2, 22 JAN 2026 to 19 FEB 2026