

APP CRS	Rwy Ldg	7000
259°	TDZE	5537
	Apt Elev	5537

RNAV (RNP) Y RWY 26

RIFLE GARFIELD COUNTY (R.I.L)

RNP AR APCH - GPS. Authorization required. From TRUEL or SLOUM: RF.

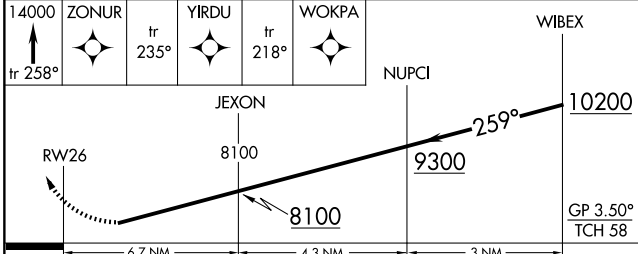
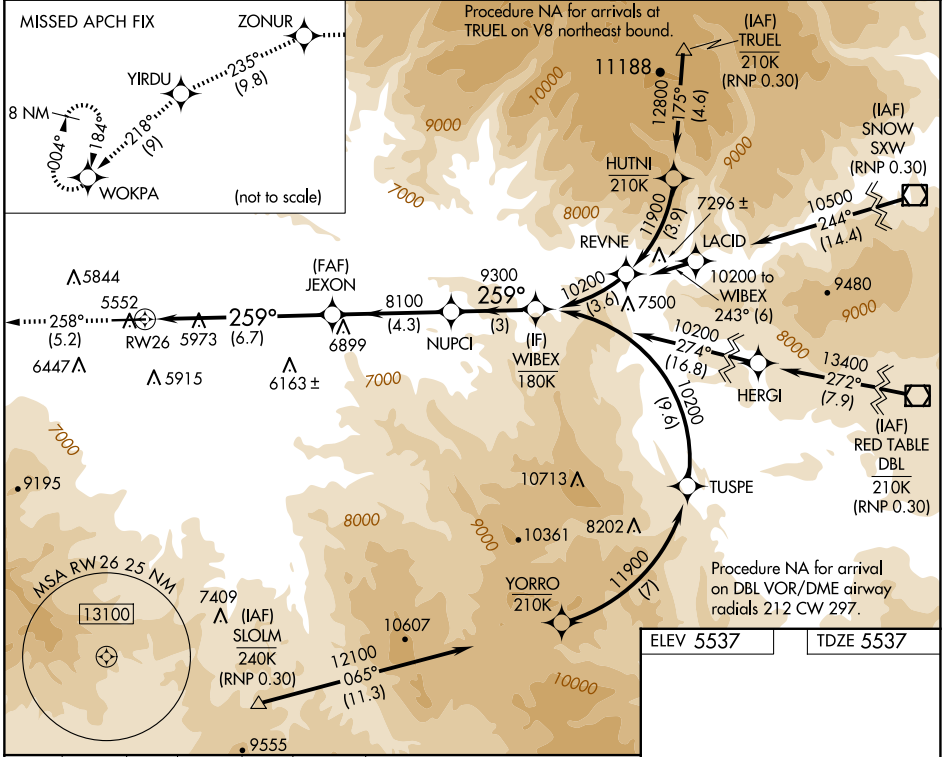
⚠ For uncompensated Baro-VNAV systems, procedure NA below -21°C or above 35°C. Inop table does not apply.

🌃 -13°C When VGSI inop, procedure NA at night.

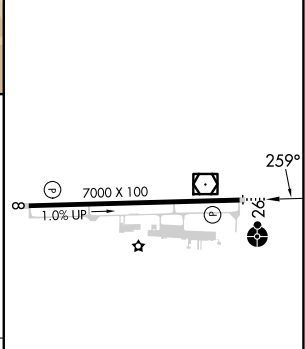
ODALS

MISSED APPROACH: Climb to 14000 on track 258° to ZONUR and on track 235° to YIRDU and on track 218° to WOKPA and hold, continue climb-in-hold to 14000.

ASOS 135,275	DENVER CENTER 134.95 327.075	UNICOM 122.8 (CTAF)
-------------------------------	---	--------------------------------------



ELEV 5537	TDZE 5537
------------------	------------------



CATEGORY	A	B	C	D
RNP 0.30 DA	6395-2½		858 (900-2½)	

AUTHORIZATION REQUIRED

HIRL Rwy 8-26 **Ⓢ**
REIL Rwy 8 **Ⓢ**

SW-1, 22 JAN 2026 to 19 FEB 2026

SW-1, 22 JAN 2026 to 19 FEB 2026