

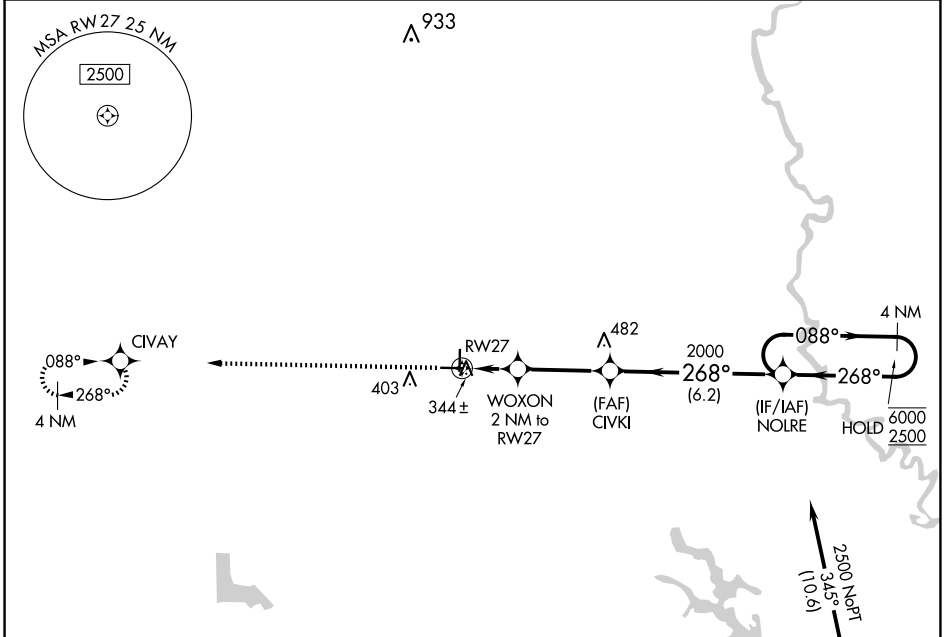
APP CRS	Rwy Idg	<b>4501</b>
<b>268°</b>	TDZE	<b>241</b>
	Apt Elev	<b>241</b>

# RNAV (GPS) RWY 27

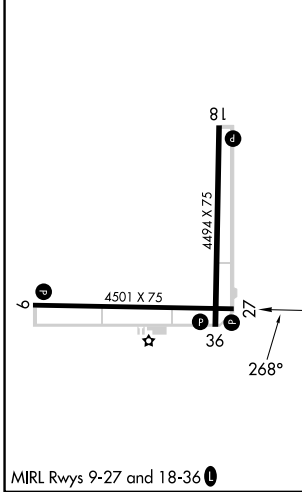
CARLISLE MUNI (4M3)

RNP APCH-GPS.	<p><b>⚠</b> Procedure NA at night. Rwy 27 helicopter visibility reduction below 1 SM NA.  <b>⚠</b> When local altimeter setting not received, use Stuttgart altimeter setting.</p>	<p>MISSED APPROACH: Climb to 2500 direct CIVAY and hold.</p>

AWOS-2 <b>119.275</b>	LITTLE ROCK APP CON <b>135.4 353.6</b>	CLNC DEL <b>135.4</b>	UNICOM <b>122.8 (CTAF) ①</b>
--------------------------	---	--------------------------	---------------------------------



ELEV 241	TDZE 241
----------	----------



2500	CIVAY	4 NM Holding Pattern	
↑	✧	NOLRE	4 NM
		268°	6000
		268°	2500
		2000	
		3.04° TCH 47	
		920	
		2 NM	3.3 NM
		6.2 NM	
CATEGORY	A	B	C
LNAV MDA	640-1	399 (400-1)	NA

SC-1, 22 JAN 2026 to 19 FEB 2026

SC-1, 22 JAN 2026 to 19 FEB 2026