

GARLAND SIX DEPARTURE

(CONTINUED ON FOLLOWING PAGE)

SC-2, 22 JAN 2026 to 19 FEB 2026

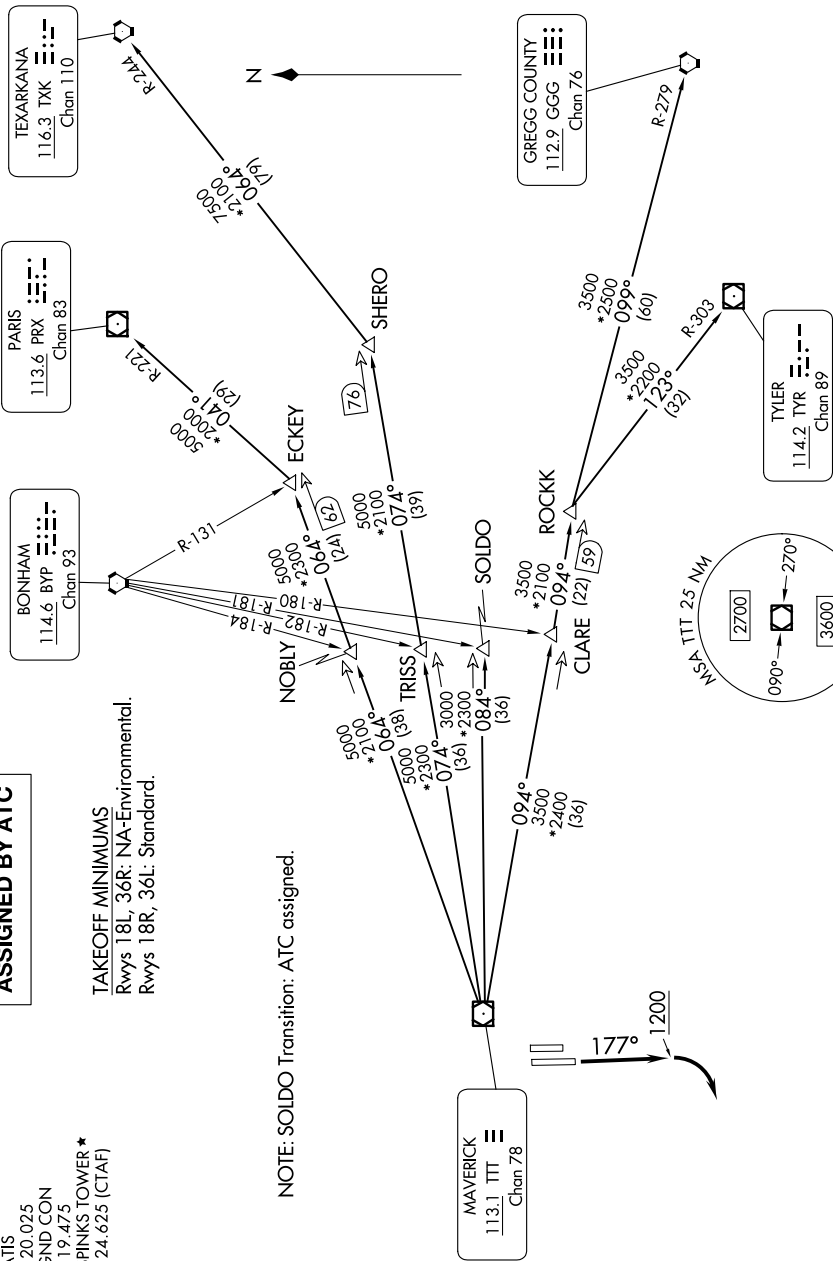
TOP ALTITUDE: ASSIGNED BY ATC

LONE STAR DEP CON
135.975 379.9
ATIS
120.025
GND CON
119.475
SPINKS TOWER*
124.625 (CTAF)

TAKEOFF MINIMUMS
Rwys 18L, 36R: NA-Environmental.
Rwys 18R, 36L: Standard.

NOTE: SOLDO Transition: ATC assigned.

RADAR and DME required.



NOTE: Chart not to scale.

SC-2, 22 JAN 2026 to 19 FEB 2026