

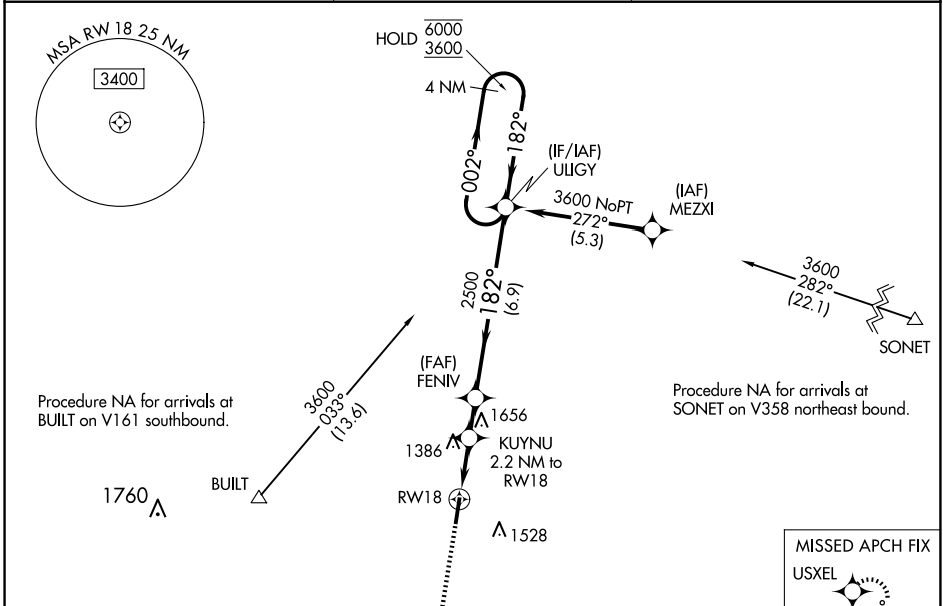
WAAS CH 72629 W18A	APP CRS 182°	Rwy Idg TDZE 1305 Apt Elev 1305	5012
--	------------------------	---	-------------

RNAV (GPS) RWY 18

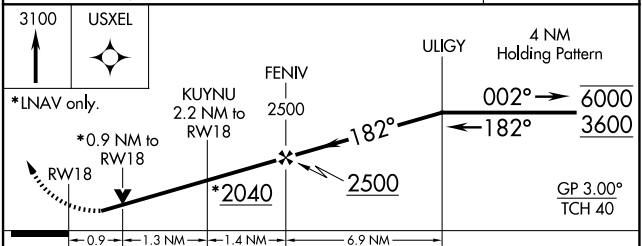
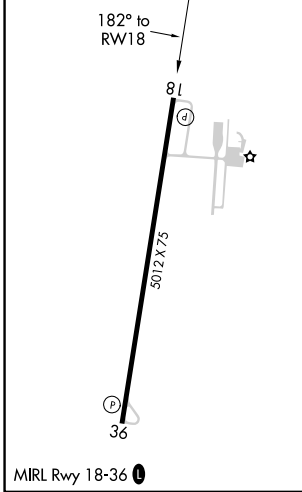
HAMILTON MUNI (MNZ)

RNP APCH-GPS.	MISSED APPROACH: Climb to 3100 direct USXEL and hold.
<p>▼ Rwy 18 helicopter visibility reduction below ¼ SM NA. For uncompensated Baro-VNAV systems, LNAV/VNAV NA below -17°C or above 54°C.</p>	

AWOS-3PT 118.525	GRAY APP CON 120.075 323.15	UNICOM 122.7 (CTAF) 0
----------------------------	---------------------------------------	---------------------------------



ELEV 1305	TDZE 1305
-----------	-----------



CATEGORY	A	B	C	D
LPV DA		1555-1 250 (300-1)		NA
LNAV/VNAV DA		1555-1 250 (300-1)		NA
LNAV MDA		1640-1 335 (400-1)		NA
CIRCLING	1680-1 375 (400-1)	1840-1 535 (600-1)	1960-1¾ 655 (700-1¾)	NA

SC-3, 22 JAN 2026 to 19 FEB 2026

SC-3, 22 JAN 2026 to 19 FEB 2026