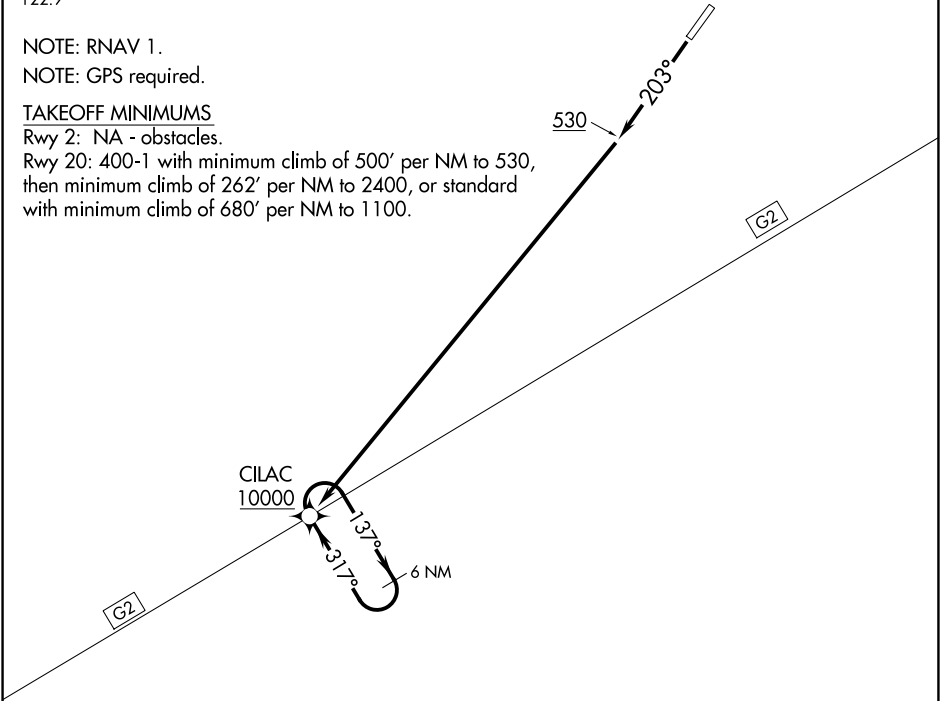


ANCHORAGE CENTER
125.35 346.3
CTAF
122.9

NOTE: RNAV 1.
NOTE: GPS required.

TAKEOFF MINIMUMS
Rwy 2: NA - obstacles.
Rwy 20: 400-1 with minimum climb of 500' per NM to 530,
then minimum climb of 262' per NM to 2400, or standard
with minimum climb of 680' per NM to 1100.



TAKEOFF OBSTACLE NOTES

Rwy 20: Tree 52' from DER, 264' right of centerline, 50' AGL/67' MSL.
Trees beginning 83' from DER, 17' right of centerline, up to 50' AGL/99' MSL.
Trees beginning 103' from DER, 190' left of centerline, up to 50' AGL/50' MSL.
Trees beginning 549' from DER, 86' left of centerline, up to 50' AGL/64' MSL.
Vehicle 1567' from DER, 156' left of centerline, 15' AGL/64' MSL.
Tree 1690' from DER, 54' left of centerline, 50' AGL/70' MSL.
Trees beginning 1937' from DER, 35' right of centerline, up to 50' AGL/149' MSL.
Tree 2385' from DER, 125' left of centerline, 50' AGL/90' MSL.
Tree 2633' from DER, 301' left of centerline, 50' AGL/100' MSL.
Trees beginning 2666' from DER, 303' right of centerline, up to 50' AGL/249' MSL.
Tree 2831' from DER, 21' left of centerline, 50' AGL/113' MSL.
Trees beginning 2850' from DER, 322' left of centerline, up to 50' AGL/149' MSL.
Trees beginning 4867' from DER, 1170' left of centerline, up to 50' AGL/349' MSL.

NOTE: Chart not to scale.

DEPARTURE ROUTE DESCRIPTION

TAKEOFF RUNWAY 20: Climb heading 203° to 530, then climb direct CILAC to at/above 10000, continue climb in CILAC holding pattern to at/above 10000 before proceeding on assigned route.