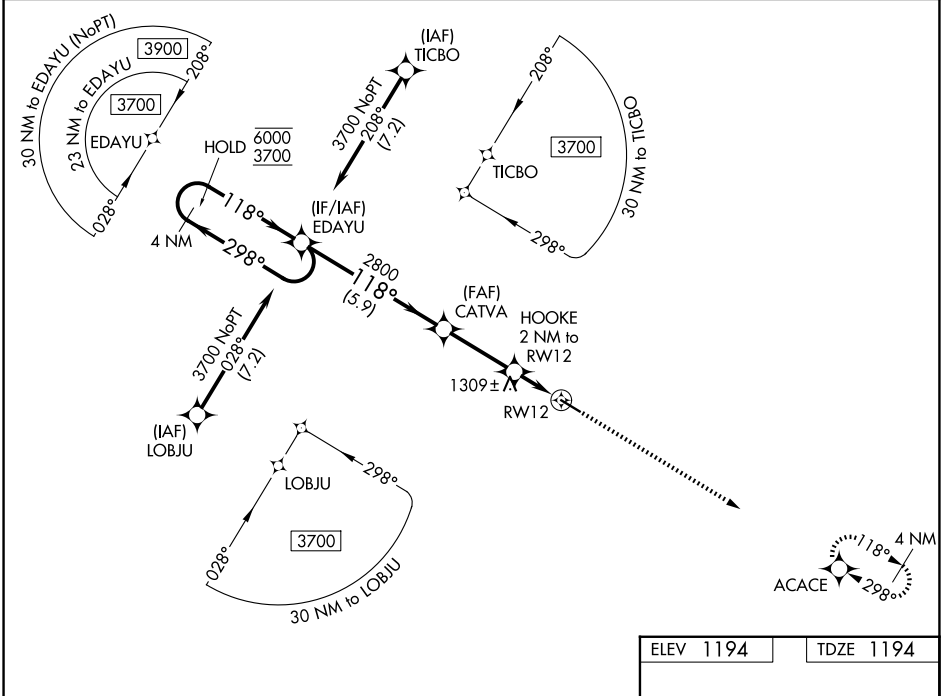


WAAS CH <b>56418</b> <b>W12A</b>	APP CRS <b>118°</b>	Rwy Ldg TDZE Apt Elev	<b>4648</b> <b>1194</b> <b>1194</b>
--	------------------------	-----------------------------	---

# RNAV (GPS) RWY 12

MYERS FLD (CNB)

RNP APCH - GPS.		MISSED APPROACH: Climb to 3700 direct ACACE and hold.
<p><b>▼</b> Rwy 12 helicopter visibility reduction below 3/4 SM NA. For uncompensated Baro-VNAV systems, LNAV/VNAV NA below -17°C or above 54°C.</p>		
AWOS-3 <b>118.575</b>	MINNEAPOLIS CENTER <b>128.5 306.2</b>	CTAF <b>122.9 0</b>



NC-1, 22 JAN 2026 to 19 FEB 2026

NC-1, 22 JAN 2026 to 19 FEB 2026

ELEV 1194		TDZE 1194	
<p>VGSI and RNAV glidepath not coincident (VGSI Angle 3.00/TCH 25).</p>			
<p>4 NM Holding Pattern</p> <p>6000 ← 298°</p> <p>3700 → 118°</p>		<p>3700 ACACE</p>	
<p>GP 3.00°</p> <p>TCH 40</p>		<p>HOOKE 2 NM to RW12</p> <p>1.1 NM to RW12</p>	
<p>5.9 NM</p>		<p>3 NM</p>	
<p>0.8 NM</p>		<p>1.1 NM</p>	
CATEGORY	A	B	C
LPV DA	1444-1 250 (300-1)		
LNAV/VNAV DA	1598-1 1/8 404 (500-1 1/8)		
LNAV MDA	1580-1 386 (400-1)	1580-1 1/8 386 (400-1 1/8)	
CIRCLING	1700-1 506 (600-1)	1800-1 3/4 606 (700-1 3/4)	1960-2 1/2 766 (800-2 1/2)
<p>MIRL Rwy 12-30 0</p> <p>REIL Rwy 12 and 30 0</p>			