

WAAS CH <b>77747</b> W13A	APP CRS <b>130°</b>	Rwy Ldg TDZE Apt Elev	<b>3798</b> <b>3497</b> <b>3505</b>
---------------------------------	------------------------	-----------------------------	---

# RNAV (GPS) RWY 13

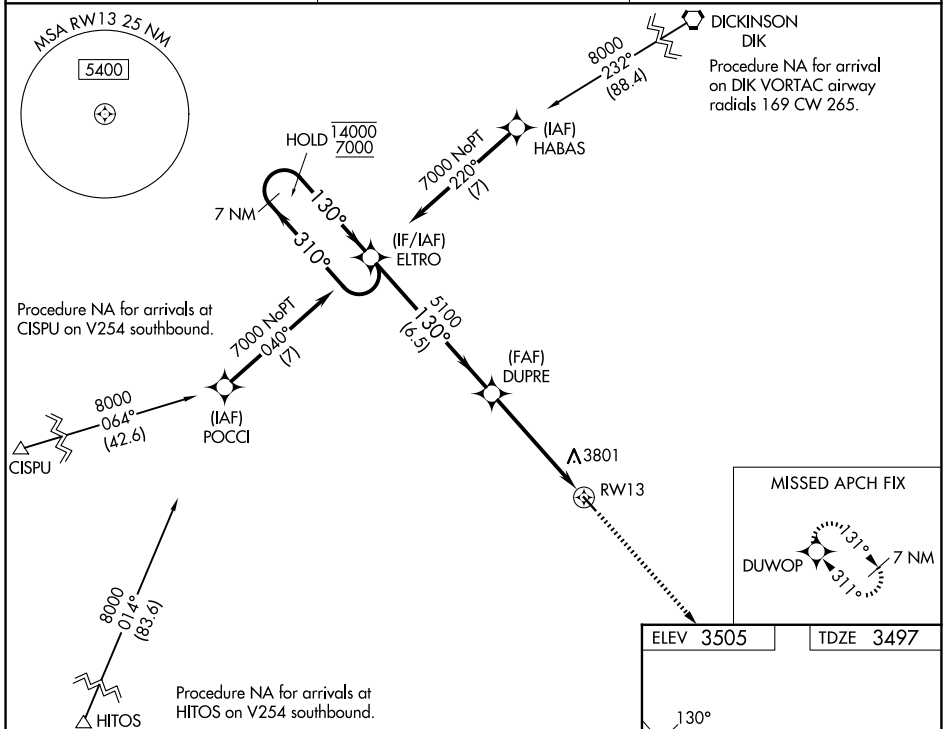
EKALAKA (97M)

RNP APCH - GPS.

**NA** Baro-VNAV NA. Use BHK altimeter setting; when not received, use BWW altimeter setting and increase LPV DA to 3967 feet and all visibilities ¼ SM, increase LNAV/VNAV DA to 4320 feet; increase all MDAs 60 feet.

MISSED APPROACH: Climb to 7000 direct DUWOP and hold, continue climb-in-hold to 7000.

BHK ASOS <b>135.475</b>	SALT LAKE CENTER <b>126.85 305.2</b>	CTAF <b>122.9 0</b>
----------------------------	---	------------------------



NW-1, 22 JAN 2026 to 19 FEB 2026

NW-1, 22 JAN 2026 to 19 FEB 2026

ELEV 3505		TDZE 3497	
<p>7 NM Holding Pattern</p> <p>GP 3.00° TCH 45</p> <p>VGSI and RNAV glidepath not coincident (VGSI Angle 3.00/TCH 24).</p> <p>7000 DUWOP</p>			
<p>14000 ← 310°</p> <p>7000 ← 130°</p>		<p>5100</p> <p>5100</p> <p>5100</p> <p>6.5 NM</p> <p>5 NM</p>	
CATEGORY	A	B	C
LPV DA	3907-1½		410 (500-1½)
LNAV/VNAV DA	4260-2½		763 (800-2½)
LNAV MDA	4260-1 763 (800-1)	4260-1¼ 763 (800-1¼)	4260-2½ 763 (800-2½)

MIRL Rwy 13-31 0