

(BRUWN7.BRUWN) 23334

GENERAL EDWARD LAWRENCE LOGAN INTL (BOS)

BRUWN SEVEN DEPARTURE (RNAV) AL-58 (FAA)

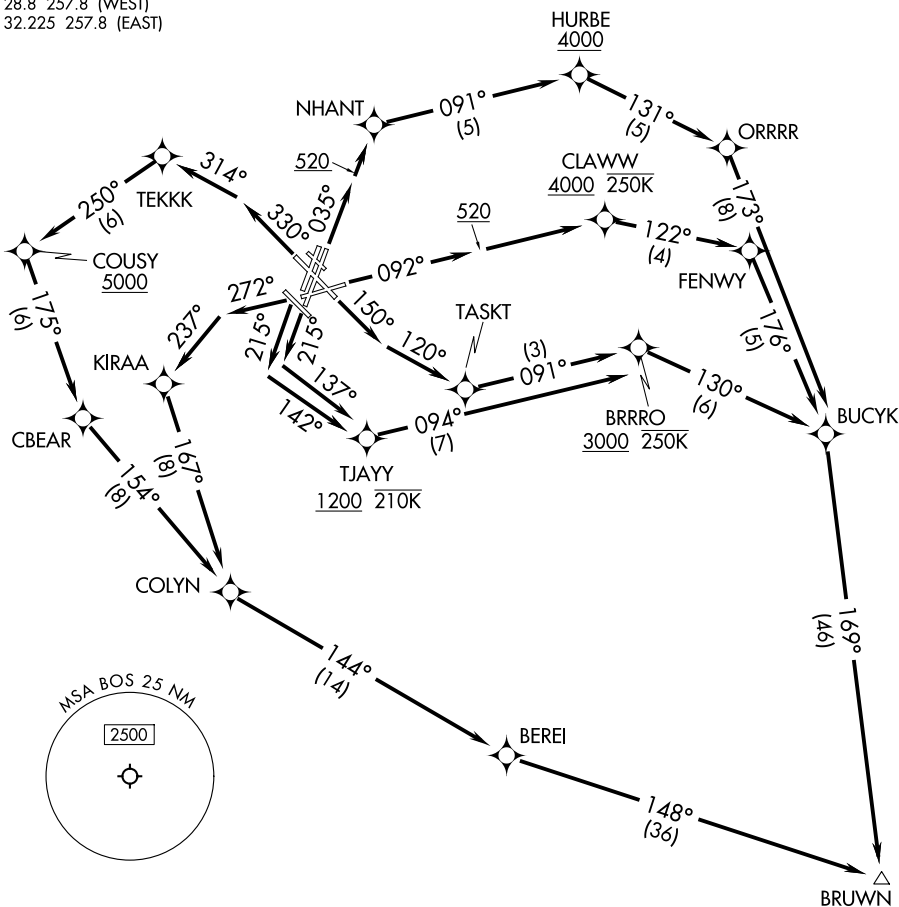
BOSTON, MASSACHUSETTS

BOSTON DEP CON  
133.0  
D-ATIS 135.0  
CLNC DEL 121.65 257.8  
CPDLC  
GND CON 121.75 121.9  
BOSTON TOWER  
128.8 257.8 (WEST)  
132.225 257.8 (EAST)

RNAV 1-DME/DME/IRU or GPS.

RADAR required for non-GPS equipped aircraft.

TOP ALTITUDE:  
5000



NE-1, 19 FEB 2026 to 19 MAR 2026

NE-1, 19 FEB 2026 to 19 MAR 2026

NOTE: Jet aircraft only.

TAKEOFF MINIMUMS:

- Rwy 4L, 14, 15L, 32, 33R: NA-ATC.
- Rwy 4R, 9, 15R, 22R, 33L: Standard with minimum climb of 500'/NM to 520.
- Rwy 22L: 300-1 with minimum climb of 500'/NM to 520, or standard with minimum climb of 500'/NM to 520 if tower reports no tall vessels in the departure area.
- Rwy 27: Standard with minimum climb of 500'/NM to 1300.

(NARRATIVE ON FOLLOWING PAGE)

NOTE: Chart not to scale.

BRUWN SEVEN DEPARTURE (RNAV)

BOSTON, MASSACHUSETTS

(BRUWN7.BRUWN) 30NOV23

GENERAL EDWARD LAWRENCE LOGAN INTL (BOS)