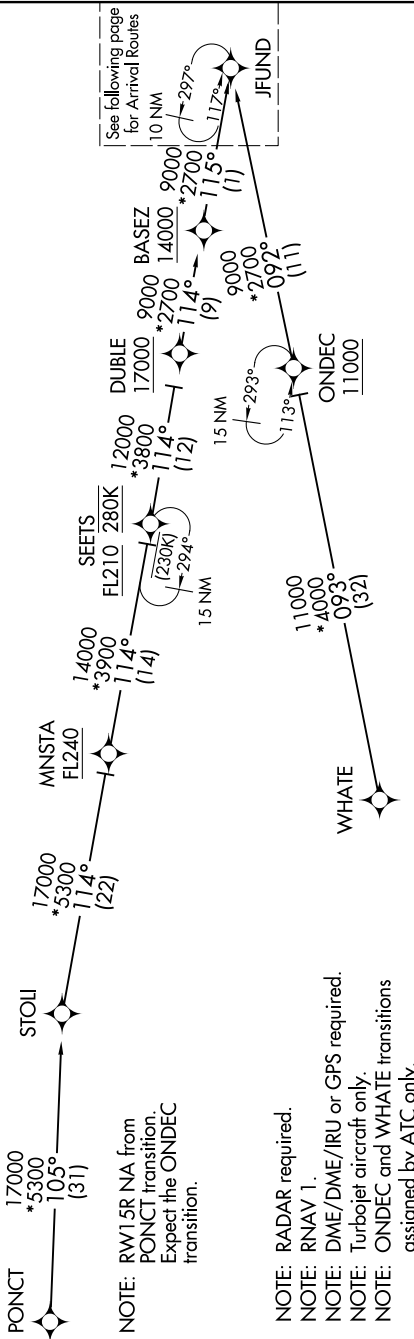


JFUND TWO ARRIVAL(RNAV) Transition Routes

NE-1, 19 FEB 2026 to 19 MAR 2026

D-ATIS  
135.0  
BOSTON APP CON  
120.6 263.1



See following page  
for Arrival Routes

NOTE: RW15R NA from  
PUNCT transition.  
Expect the ONDEC  
transition.

NOTE: RADAR required.  
NOTE: RNAV 1.  
NOTE: DME/DME/IRU or GPS required.  
NOTE: Turbojet aircraft only.  
NOTE: ONDEC and WHATE transitions  
assigned by ATC only.



ONDEC TRANSITION [ONDEC.JFUND2]:  
PUNCT TRANSITION [PUNCT.JFUND2]  
WHATE TRANSITION [WHATE.JFUND2]:

NOTE: Not to scale. (CONTINUED ON FOLLOWING PAGE)

JFUND TWO ARRIVAL(RNAV) Transition Routes

NE-1, 19 FEB 2026 to 19 MAR 2026