

PATSS SEVEN DEPARTURE (RNAV)

AL-58 (FAA)

BOSTON, MASSACHUSETTS

NE-1, 19 FEB 2026 to 19 MAR 2026

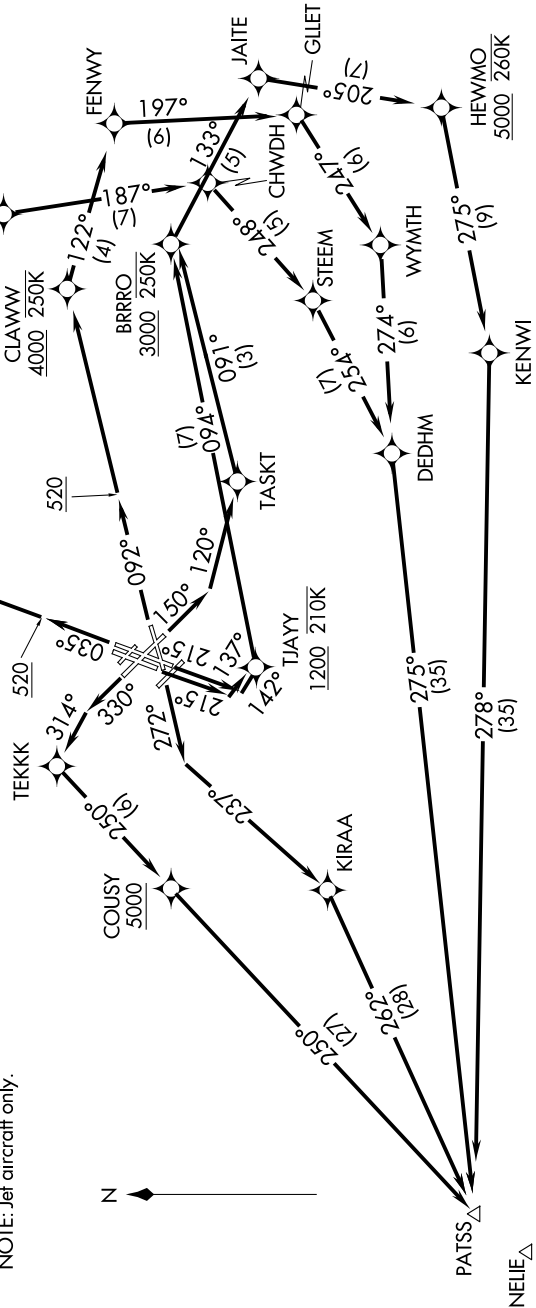
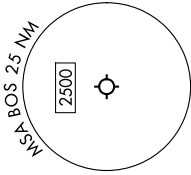
**TOP ALTITUDE:**  
5000

RNAV 1 - DME/DME/IRU or GPS.  
RADAR required for non-GPS equipped aircraft.

**TAKEOFF MINIMUMS:**  
Rwy 4L, 14, 15L, 32, 33R: NA-ATC.  
Rwy 4R, 9, 15R, 22R, 33L: Standard with minimum climb of 500'/NM to 520.  
Rwy 22L: 300-1 with minimum climb of 500'/NM to 520, or standard with minimum climb of 500'/NM to 520, if tower reports no tall vessels in the departure area.  
Rwy 27: Standard with minimum climb of 500'/NM to 1300.

BOSTON DEP CON  
133.0  
D-ATIS  
135.0  
CLNC DEL  
121.65 257.8  
CPDLC  
GND CON  
121.75 121.9  
BOSTON TOWER  
128.8 257.8 (WEST)  
132.225 257.8 (EAST)

NOTE: Jet aircraft only.



NOTE: Chart not to scale.

(NARRATIVE ON FOLLOWING PAGE)

NE-1, 19 FEB 2026 to 19 MAR 2026