

REVSS SIX DEPARTURE (RNAV)

AL-58 (FAA)

BOSTON, MASSACHUSETTS

NE-1, 19 FEB 2026 to 19 MAR 2026

TOP ALTITUDE: 5000

RNAV 1 - DME/DME/IRU or GPS.

RADAR required for non-GPS equipped aircraft.

TAKEOFF MINIMUMS

Rwy 4L, 14, 15L, 32, 33R: NA - ATC.

Rwy 4R, 9, 15R, 22R, 33L: Standard with minimum climb of 500'/NM to 520.

Rwy 22L: 300-1 with minimum climb of 500'/NM to 520, or standard with minimum climb of 500'/NM to 520 if tower reports no tall vessels in the departure area.

Rwy 27: Standard with minimum climb of 500' per NM to 1300.

the departure area.

BOSTON TOWER

128.8 257.8 (WEST)

132.225 257.8 (EAST)

NOTE: Jet aircraft only.

BOSTON DEP CON

133.0

D-ATIS 135.0

CLINC DEL

121.65 257.8

CPDIC

GND CON

121.75 121.9

BOSTON TOWER

128.8 257.8 (WEST)

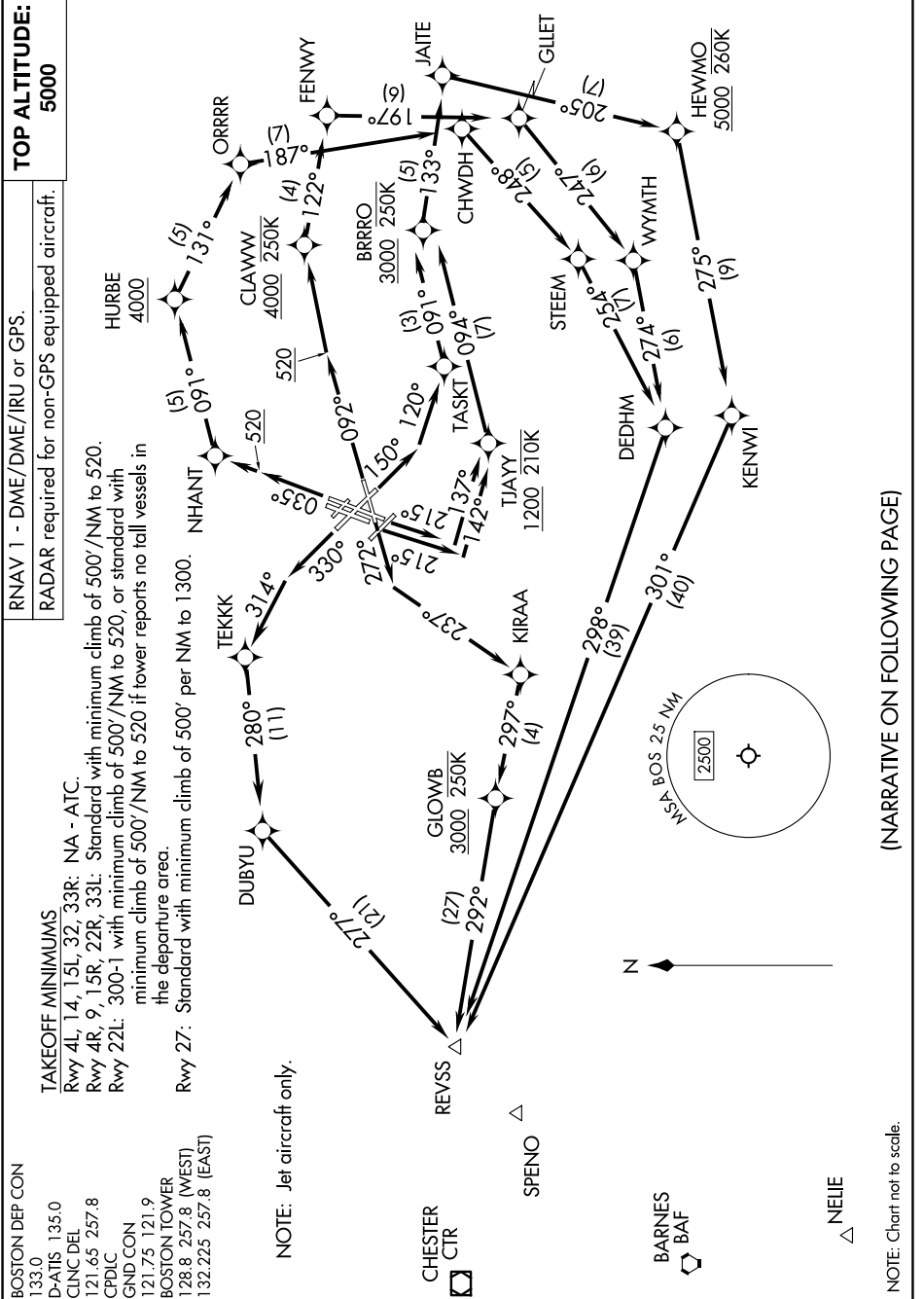
132.225 257.8 (EAST)

REVSS SIX DEPARTURE (RNAV)

(REVSS6.REVSS) 30NOV23

BOSTON, MASSACHUSETTS

GENERAL EDWARD LAWRENCE LOGAN INTL (BOS)



BARNES BAF

NELIE

NOTE: Chart not to scale.

(NARRATIVE ON FOLLOWING PAGE)

NE-1, 19 FEB 2026 to 19 MAR 2026