

(SSOXS7.SSOXS) 23334

GENERAL EDWARD LAWRENCE LOGAN INTL (BOS)

SSOXS SEVEN DEPARTURE (RNAV)

AL-58 (FAA)

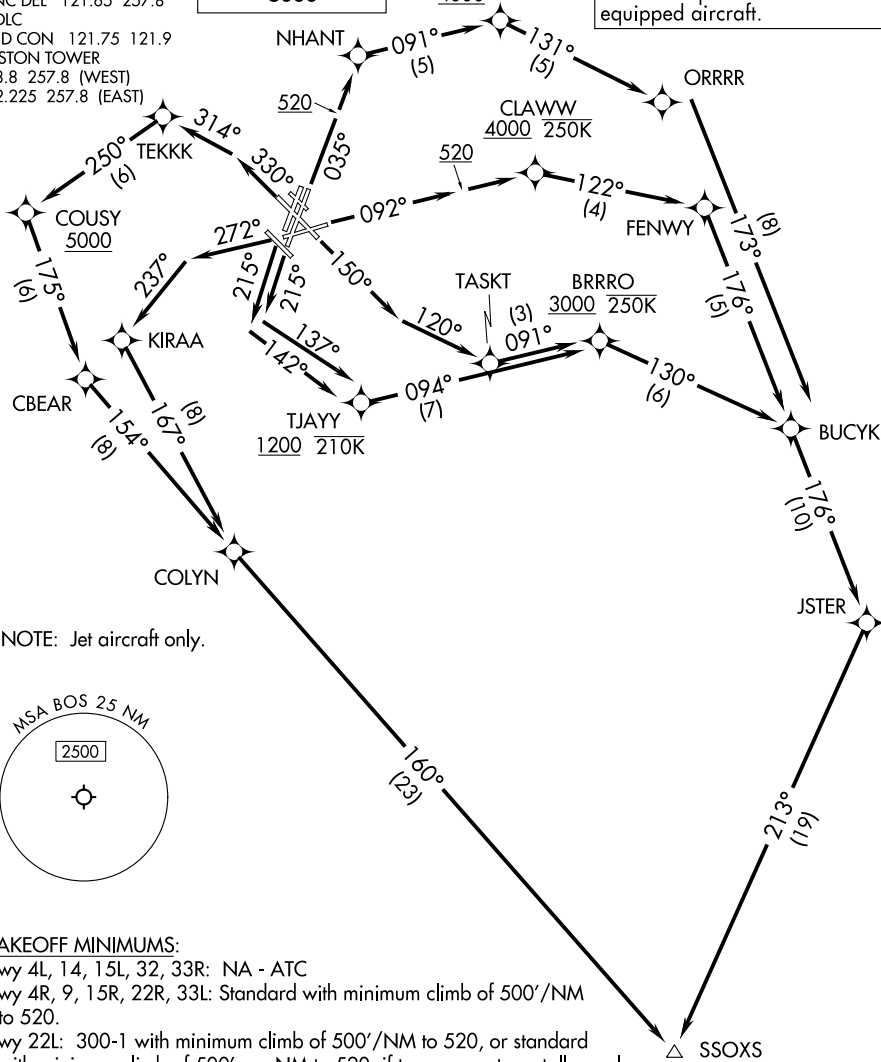
BOSTON, MASSACHUSETTS

BOSTON DEP CON 133.0
 D-ATIS 135.0
 CLNC DEL 121.65 257.8
 CPDLC
 GND CON 121.75 121.9
 BOSTON TOWER
 128.8 257.8 (WEST)
 132.225 257.8 (EAST)

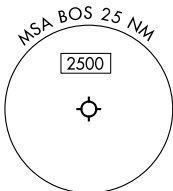
TOP ALTITUDE:
5000

HURBE
 4000

RNAV 1-DME/DME/IRU or GPS.
 RADAR required for non-GPS
 equipped aircraft.



NOTE: Jet aircraft only.



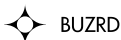
TAKEOFF MINIMUMS:

Rwy 4L, 14, 15L, 32, 33R: NA - ATC

Rwy 4R, 9, 15R, 22R, 33L: Standard with minimum climb of 500'/NM to 520.

Rwy 22L: 300-1 with minimum climb of 500'/NM to 520, or standard with minimum climb of 500' per NM to 520, if tower reports no tall vessels in the departure area.

Rwy 27: Standard with minimum climb of 500'/NM to 1300.



BUZRD

SANDY POINT

SEY



(NARRATIVE ON FOLLOWING PAGE)

NOTE: Chart not to scale.

SSOXS SEVEN DEPARTURE (RNAV)

BOSTON, MASSACHUSETTS

(SSOXS7.SSOXS) 30NOV23

GENERAL EDWARD LAWRENCE LOGAN INTL (BOS)

NE-1, 19 FEB 2026 to 19 MAR 2026

NE-1, 19 FEB 2026 to 19 MAR 2026