

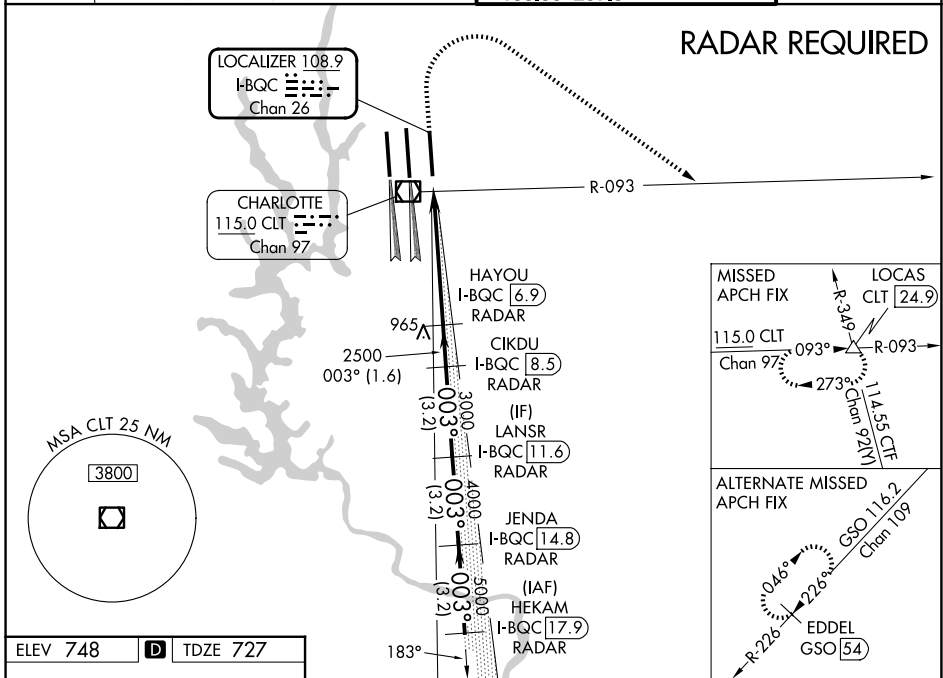
LOC/DME I-BQC <b>108.9</b> Chan 26	APP CRS <b>003°</b>	Rwy Ldg TDZE Apt Elev	<b>8390</b> <b>727</b> <b>748</b>
--	------------------------	-----------------------------	---

# ILS RWY 36R (CAT II & III)

CHARLOTTE/DOUGLAS INTL (CLT)

Simultaneous approach authorized. DME or RADAR required.	ALS-F-2	MISSED APPROACH: Climb to 1320 then climbing right turn to 4000 on CLT VOR/DME R-093 to LOCAS INT/24.9 DME and hold.	

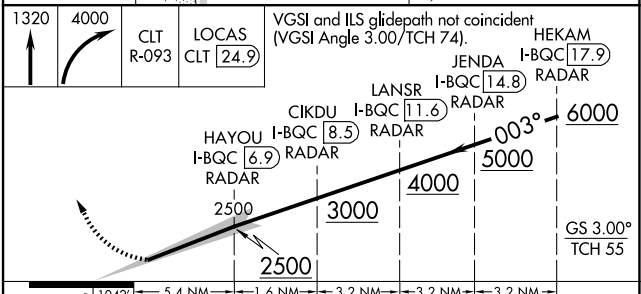
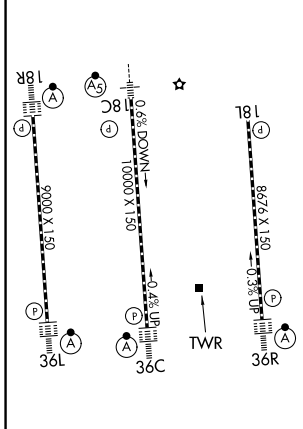
D-ATIS <b>121.15</b>	CHARLOTTE APP CON		CHARLOTTE TOWER		GND CON
	<b>128.325</b> (001°-119°)	<b>257.2</b> (180°-359°)	<b>118.1</b> <b>257.8</b> (Rwys 18L-36R)	<b>126.4</b> <b>257.8</b> (Rwy 18C-36C)	<b>121.8</b> <b>348.6</b> (W)
	<b>120.05</b> (120°-295°)	<b>307.8</b> (360°-179°)	<b>133.35</b> <b>257.8</b> (Rwy 18R-36L)		<b>121.9</b> <b>348.6</b> (E)



SE-2, 19 FEB 2026 to 19 MAR 2026

SE-2, 19 FEB 2026 to 19 MAR 2026

ELEV 748	<b>D</b>	TDZE 727
----------	----------	----------



CATEGORY	A	B	C	D
S-ILS 36R	CAT II RA 119/12 100 DA 827			
S-ILS 36R	CAT IIIa RVR 06			
S-ILS 36R	CAT IIIb NA			
S-ILS 36R	CAT IIIc NA			

## CATEGORY II & III ILS SPECIAL AIRCREW & AIRCRAFT CERTIFICATION REQUIRED