

APP CRS	Rwy Ldg <b>10000</b>
<b>003°</b>	TDZE <b>707</b>
	Apt Elev <b>748</b>

# RNAV (RNP) Z RWY 36C

CHARLOTTE/DOUGLAS INTL (CLT)

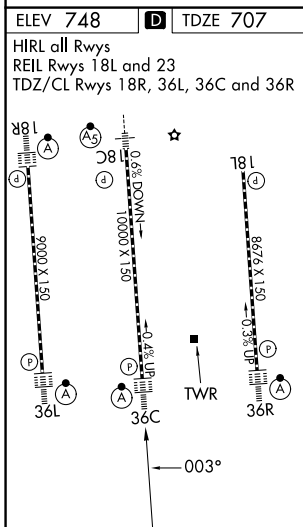
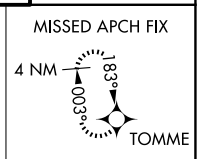
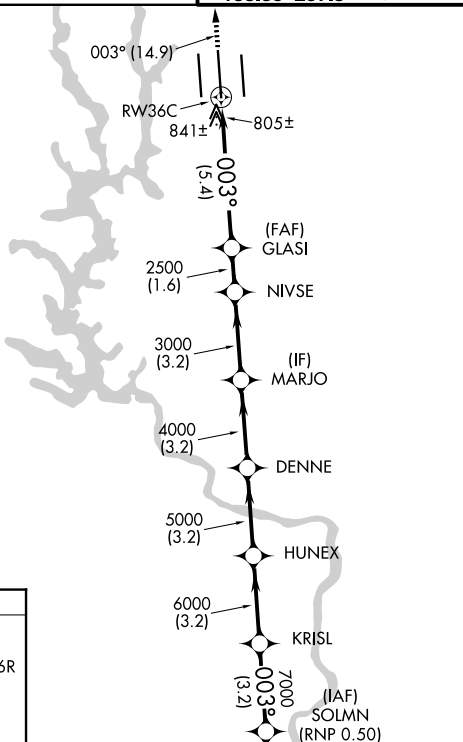
RNP AR APCH - GPS.

Simultaneous approach authorized. Use of FD or AP required during simultaneous operations. For uncompensated Baro-VNAV systems, procedure NA below -8°C or above 54°C. For inop ALS, increase RNP 0.30 visibility all Cats to 1½ SM.



MISSED APPROACH: Climb to 3000 on track 003° to TOMME and hold.

D-ATIS	CHARLOTTE APP CON	CHARLOTTE TOWER	GND CON
<b>121.15</b>	<b>128.325</b> (001°-119°) <b>120.05</b> (120°-295°) <b>134.75</b> (296°-360°)	<b>118.1 257.8</b> (Rwys 18L-36R) <b>126.4 257.8</b> (Rwy 18C-36C) <b>133.35 257.8</b> (Rwy 18R-36L)	<b>121.8 348.6</b> (W) <b>121.9 348.6</b> (E)



3000	TOMME	VGSi and RNAV glidepath not coincident (VGSi Angle 3.00/TCH 72).		SOLMNM				
↑	003°	GLASI	NIVSE	MARJO	DENNE	HUNEX	KRISL	8000
		2500	3000	4000	5000	6000	7000	GP 3.05° TCH 57
		5.4 NM	1.6 NM	3.2 NM	3.2 NM	3.2 NM	3.2 NM	
CATEGORY	A	B		C		D		
RNP 0.11 DA	1134/40		427 (400-¾)					
RNP 0.30 DA	1180/50		473 (500-1)					

**AUTHORIZATION REQUIRED**