

LOC/DME I-VZE 108.95 Chan 26(Y)	APP CRS 273°	Rwy Ldg TDZE 651 Apt Elev 680
--	------------------------	---

ILS RWY 28C (CAT II & III)

CHICAGO O'HARE INTL (ORD)

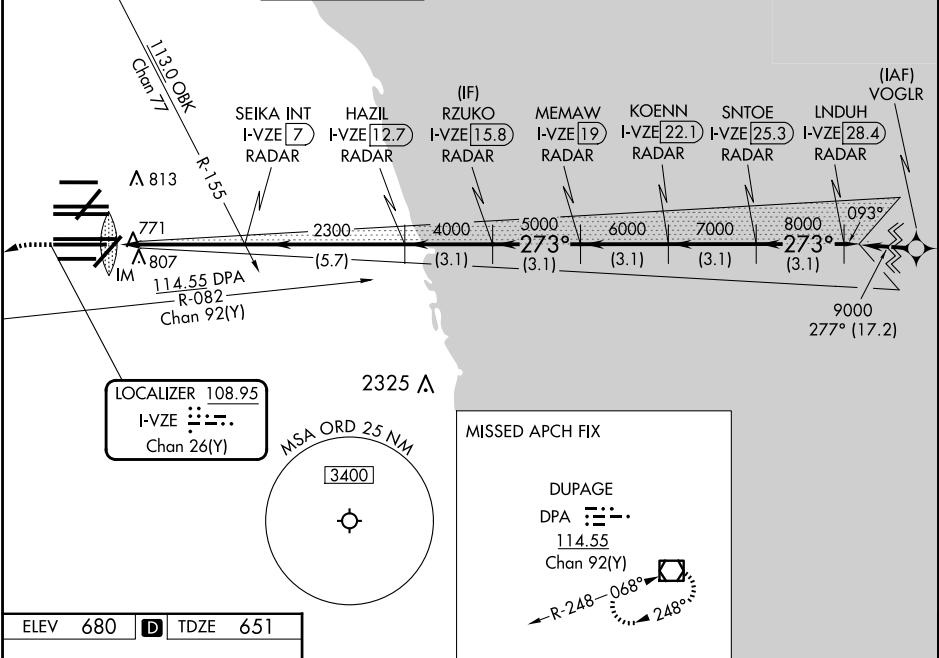
From VOGLR: RNAV 1-GPS required.
Aircraft not GPS equipped - RADAR required for procedure entry.
DME or RADAR required.

Simultaneous approach authorized. CAT II: RVR 1000 authorized with specific OPSPEC, MSPEC, or LOA approval and use of autoland or HUD to touchdown.

ALSF-2

MISSED APPROACH: Climb to 1100 then climbing left turn to 4000 on heading 215° and DPA VOR/DME R-082 to DPA VOR/DME and hold.

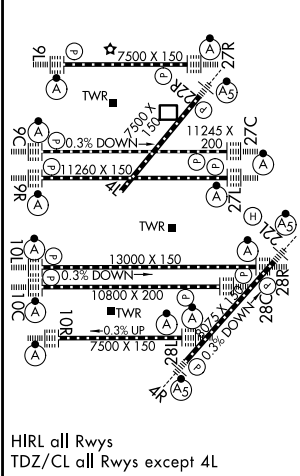
D-ATIS 135.4 282.225	CHICAGO APP CON 119.0 292.125	O'HARE TOWER 120.75 348.0	GND CON 124.125 (TWR NORTH) 118.05 (TWR SOUTH) 226.675 (ALL TWRs)	(TWR CENTER) 121.75 (OBND) 121.9 (IBND)	CLNC DEL 121.6	CPDLC
--	---	-------------------------------------	---	---	--------------------------	-------



EC-3, 19 FEB 2026 to 19 MAR 2026

EC-3, 19 FEB 2026 to 19 MAR 2026

ELEV 680	D	TDZE 651
-----------------	----------	-----------------



1100	4000	DPA R-082	DPA	VGSI and ILS glidepath not coincident (VGSI Angle 3.00°/TCH 80).	LINDUH I-VZE 28.4 RADAR					
hdg 215°	750	2300	2300	4000	5000	6000	7000	8000	9000	
SEIKA INT I-VZE 7 RADAR	HAZIL I-VZE 12.7 RADAR	RZUKO I-VZE 15.8 RADAR	MEMAW I-VZE 19 RADAR	KOENN I-VZE 22.1 RADAR	SNTOE I-VZE 25.3 RADAR					
IM	2300	4000	5000	6000	7000	8000	GS 3.00° TCH 55			
5 NM	5.7 NM	3.1 NM	3.1 NM	3.1 NM	3.1 NM	3.1 NM				
CATEGORY	A	B	C	D						
S-ILS 28C	CAT II RA 105/12 100 DA 751									
S-ILS 28C	CAT III RVR 06									

CATEGORY II & III ILS - SPECIAL AIRCREW & AIRCRAFT CERTIFICATION REQUIRED