

| | | |
|---|------------------------|--|
| LOC/DME I-JAV 110.5 Chan 42 | APP CRS 093° | Rwy Ldg 11260 TDZE 668 Apt Elev 680 |
|---|------------------------|--|

ILS RWY 9R (CAT II & III)

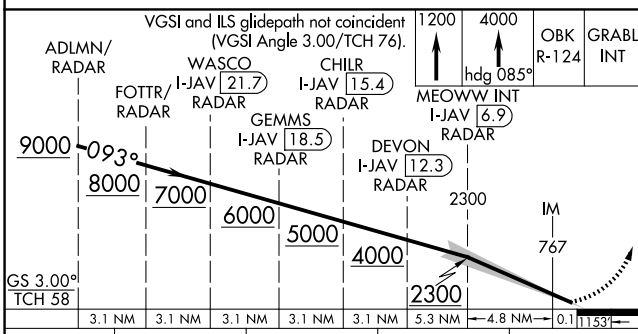
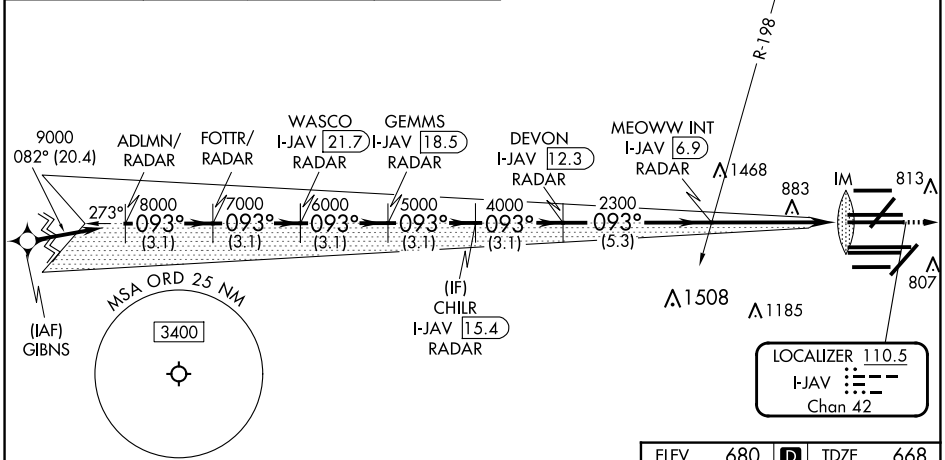
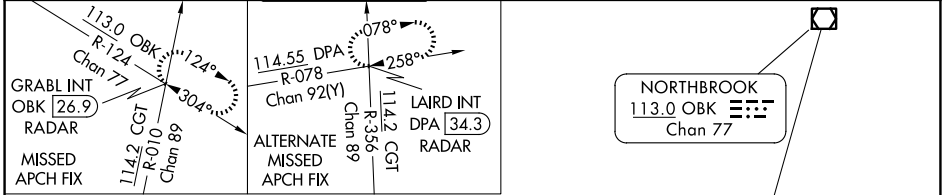
CHICAGO O'HARE INTL (ORD)

RNP APCH-GPS from GIBNS.
Aircraft not GPS equipped - RADAR required for procedure entry. RADAR or DME required.

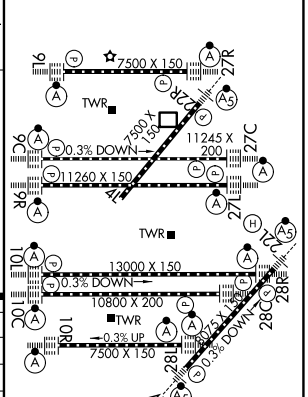
ALSF-2 MISSED APPROACH: Climb to 1200 then climb to 4000 on heading 085° and OBK VOR/DME R-124 to GRABL INT/OBK 26.9 DME/RADAR and hold.

Simultaneous approach authorized.

| | | | | | | |
|--|---|------------------------------------|--|---|--------------------------|-------|
| D-ATIS 135.4 282.225 | CHICAGO APP CON 119.0 292.125 | O'HARE TOWER 126.9 348.0 | GND CON (TWR CENTER) 124.125 (TWR NORTH) 118.05 (TWR SOUTH) 226.675 (ALL TWRs) | (TWR CENTER) 121.75 (OBND) 121.9 (IBND) | CLNC DEL 121.6 | CPDLC |
|--|---|------------------------------------|--|---|--------------------------|-------|



| | | |
|----------|----------|----------|
| ELEV 680 | D | TDZE 668 |
|----------|----------|----------|



| | | | | |
|----------|----------------------------|---|---|---|
| CATEGORY | A | B | C | D |
| S-ILS 9R | CAT II RA 99/12 100 DA 768 | | | |
| S-ILS 9R | CAT III RVR 06 | | | |

CATEGORY II & III ILS - SPECIAL AIRCREW & AIRCRAFT CERTIFICATION REQUIRED

HIRL all Rwys
TDZ/CL all Rwys except 4L