

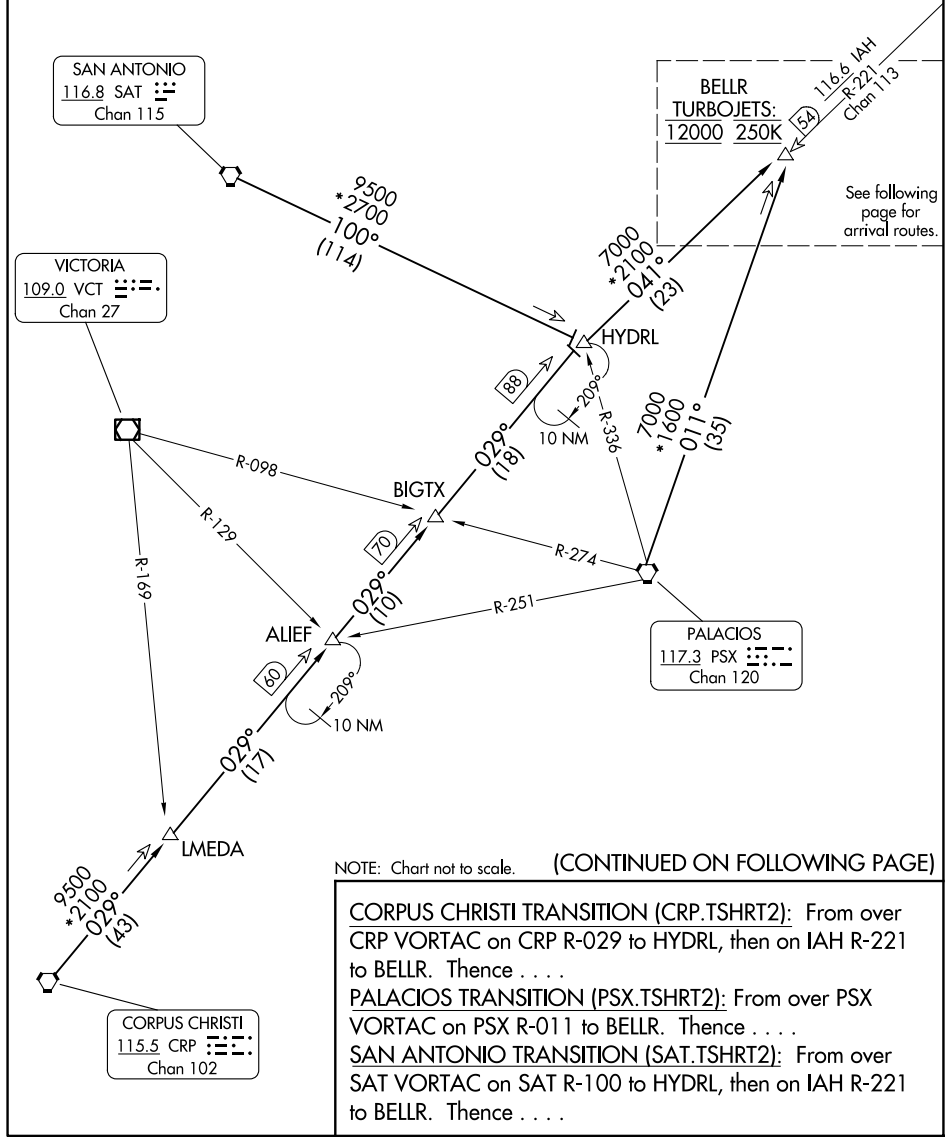
# TSHRT TWO ARRIVAL

## Transition Routes

HOUSTON, TEXAS

HOUSTON APP CON  
 119.175 291.675  
 EFD ATIS  
 135.575 269.9  
 HOU D-ATIS  
 124.6  
 SGR ATIS  
 118.125  
 TME ATIS  
 119.525

NOTE: RADAR required.  
 NOTE: DME/DME/IRU or GPS equipped turbojet and turboprop aircraft landing HOU must file the BELLR (RNAV) STAR.  
 NOTE: DME required.  
 NOTE: DME required for holding at HYDRL.



SC-5, 19 FEB 2026 to 19 MAR 2026

SC-5, 19 FEB 2026 to 19 MAR 2026

NOTE: Chart not to scale. (CONTINUED ON FOLLOWING PAGE)

**CORPUS CHRISTI TRANSITION (CRP.TSHRT2):** From over CRP VORTAC on CRP R-029 to HYDRL, then on IAH R-221 to BELLR. Thence . . . .

**PALACIOS TRANSITION (PSX.TSHRT2):** From over PSX VORTAC on PSX R-011 to BELLR. Thence . . . .

**SAN ANTONIO TRANSITION (SAT.TSHRT2):** From over SAT VORTAC on SAT R-100 to HYDRL, then on IAH R-221 to BELLR. Thence . . . .

# TSHRT TWO ARRIVAL

## Transition Routes

HOUSTON, TEXAS