

GLADZ FOUR DEPARTURE (RNAV) Transition Routes

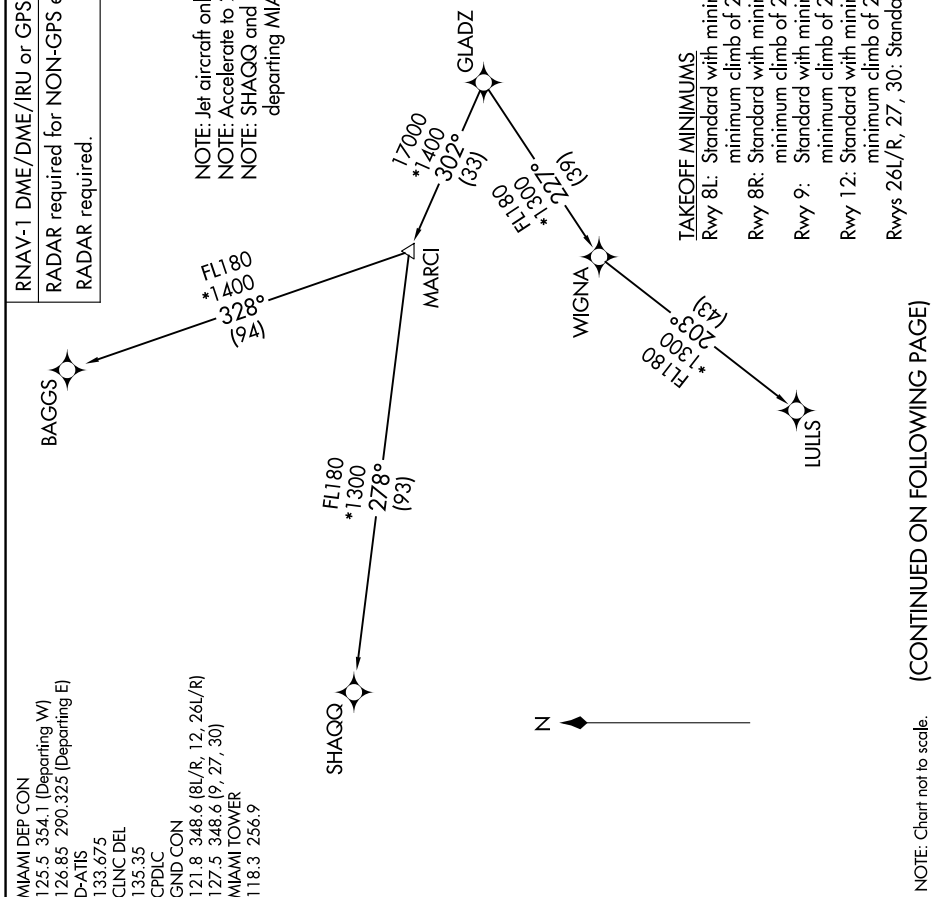
SE-3, 19 FEB 2026 to 19 MAR 2026

**TOP ALTITUDE:
5000**

RNAV-1 DME/DME/IRU or GPS.
RADAR required for NON-GPS equipped aircraft.
RADAR required.

MIAMI DEP CON
125.5 354.1 (Departing W)
126.85 290.325 (Departing E)
D-ATIS
133.675
CLNC DEL
135.35
CPDLC
GND CON
121.8 348.6 (8L/R, 12, 26L/R)
127.5 348.6 (9, 27, 30)
MIAMI TOWER
118.3 256.9

NOTE: Jet aircraft only.
NOTE: Accelerate to 250K until leaving 10000, if unable, advise ATC.
NOTE: SHAGG and BAGGS transitions ATC assigned except aircraft departing MIA.



TAKEOFF MINIMUMS
Rwy 8L: Standard with minimum climb of 500'/NM to 520, then minimum climb of 215'/NM to 1400.
Rwy 8R: Standard with minimum climb of 500'/NM to 520, then minimum climb of 235'/NM to 1400.
Rwy 9: Standard with minimum climb of 500'/NM to 520, then minimum climb of 240'/NM to 1400.
Rwy 12: Standard with minimum climb of 500'/NM to 520, then minimum climb of 230'/NM to 1400.
Rwys 26L/R, 27, 30: Standard with minimum climb of 500'/NM to 520.

(CONTINUED ON FOLLOWING PAGE)

NOTE: Chart not to scale.

SE-3, 19 FEB 2026 to 19 MAR 2026