

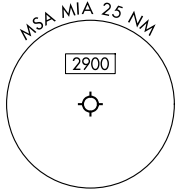
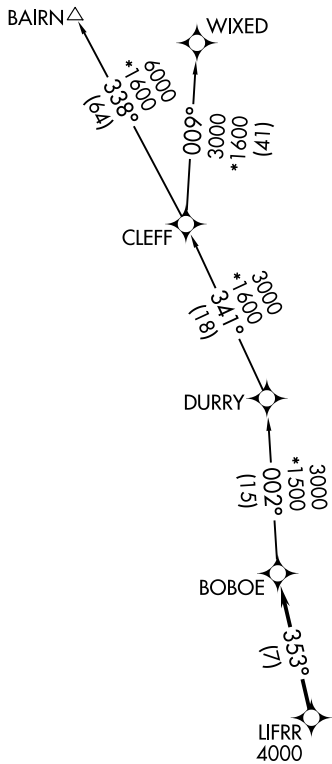
LIFRR TWO DEPARTURE (RNAV)

**TOP ALTITUDE:
ASSIGNED BY ATC**

RNAV 1 - DME/DME/IRU or GPS.

RADAR required for non-GPS equipped aircraft.

MIAMI DEP CON
126.85 290.325
D-ATIS
133.675
CLNC DEL
135.35
CPDLC
GND CON
121.8 348.6 (8L/R, 12, 26L/R)
127.5 348.6 (9, 27, 30)
MIAMI TOWER
118.3 256.9



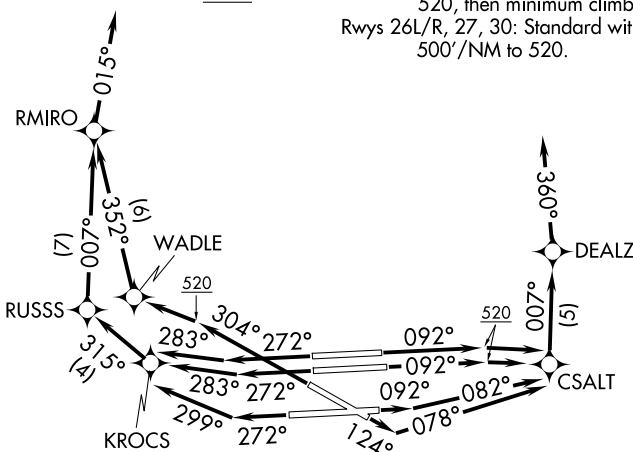
NOTE: Accelerate to 250K until leaving 10000, if unable, advise ATC.

NOTE: Jet aircraft only.

NOTE: For aircraft filed at or below 12000.

TAKEOFF MINIMUMS

- Rwy 8L: Standard with minimum climb of 500'/NM to 520, then minimum climb of 215'/NM to 1400.
- Rwy 8R: Standard with minimum climb of 500' per NM to 520, then minimum climb of 235'/NM to 1400.
- Rwy 9: Standard with minimum climb of 500'/NM to 520, then minimum climb of 240'/NM to 1400.
- Rwy 12: Standard with minimum climb of 500'/NM to 520, then minimum climb of 230'/NM to 1400.
- Rwys 26L/R, 27, 30: Standard with minimum climb of 500'/NM to 520.



(CONTINUED ON FOLLOWING PAGE)

NOTE: Chart not to scale.

LIFRR TWO DEPARTURE (RNAV)