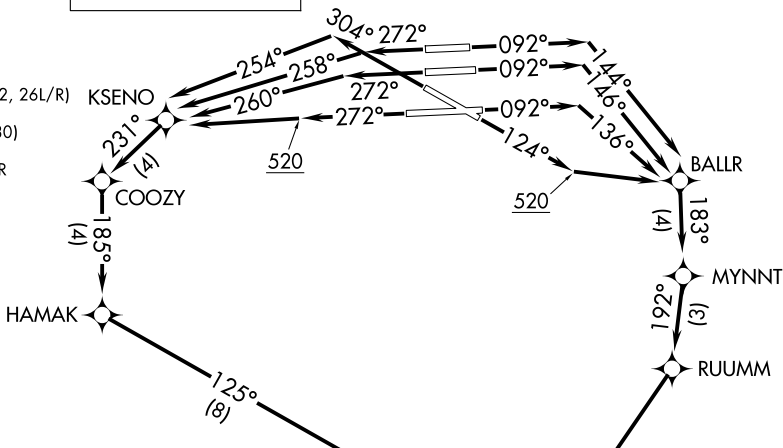


# MAYNR THREE DEPARTURE (RNAV) Departure Routes

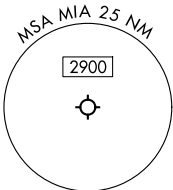
MIAMI DEP CON  
125.5 354.1  
D-ATIS  
133.675  
CLINC DEL  
135.35  
CPDLC  
GND CON  
(Rwys 8L/R, 12, 26L/R)  
121.8 348.6  
(Rwys 9, 27, 30)  
127.5 348.6  
MIAMI TOWER  
118.3 256.9

**TOP ALTITUDE:  
5000**



RNAV 1 - DME/DME/IRU or GPS.  
From SLIPT to MAXIM: RNAV 1- GPS.  
From SLIPT to CANOA: RNAV 1- GPS.  
RADAR required for non-GPS equipped aircraft.  
RADAR required.

NOTE: Jet aircraft only.  
NOTE: Accelerate to 250K until leaving 10000, if unable, advise ATC.



**TAKEOFF MINIMUMS**  
Rwy 8L: Standard with minimum climb of 500'/NM to 520, then minimum climb of 215'/NM to 1400.  
Rwy 8R: Standard with minimum climb of 500'/NM to 520, then minimum climb of 235'/NM to 1400.  
Rwy 9: Standard with minimum climb of 500'/NM to 520, then minimum climb of 240'/NM to 1400.  
Rwy 12: Standard with minimum climb of 500'/NM to 520, then minimum climb of 230'/NM to 1400.  
Rwys 26L/R, 27, 30: Standard with minimum climb of 500'/NM to 520.

See following page for transition routes.  
MAYNR △

(CONTINUED ON FOLLOWING PAGE) NOTE: Chart not to scale.

SE-3, 19 FEB 2026 to 19 MAR 2026

SE-3, 19 FEB 2026 to 19 MAR 2026