

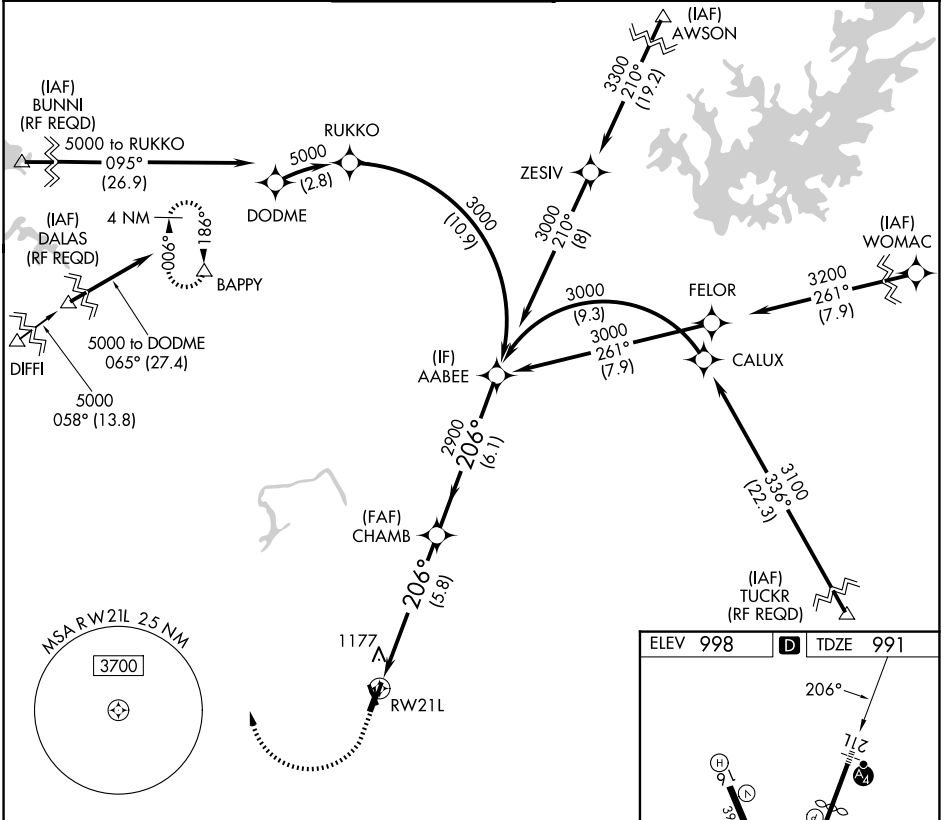
APP CRS <b>206°</b>	Rwy Ldg TDZE Apt Elev	<b>4996</b> <b>991</b> <b>998</b>
------------------------	-----------------------------	---

# RNAV (RNP) Z RWY 21L

DEKALB-PEACHTREE (PDK)

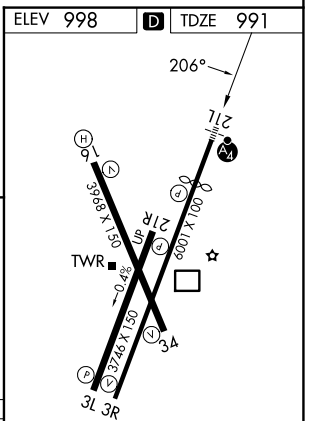
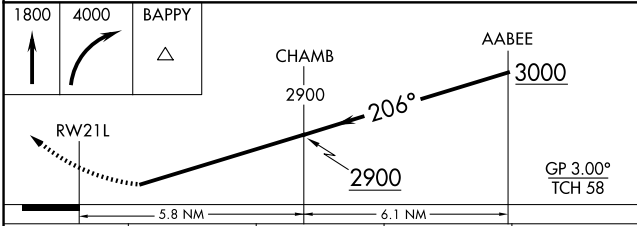
For uncompensated Baro-VNAV systems, procedure NA below 1°C (37°F) or above 54°C (130°F). For inop MALSF, increase RNP 0.30 all Cats visibility to 1¾. GPS required.	MALSF	MISSED APPROACH: Climb to 1800 then climbing right turn to 4000 direct BAPPY and hold.

ATIS <b>128.4</b>	ATLANTA APP CON <b>126.975 239.275</b>	PEACHTREE TOWER ★ <b>120.9 (CTAF) 281.5</b>	GND CON <b>121.6</b>	UNICOM <b>122.95</b>	<b>120.0</b>
----------------------	---	--	-------------------------	-------------------------	--------------



SE-4, 19 FEB 2026 to 19 MAR 2026

SE-4, 19 FEB 2026 to 19 MAR 2026



CATEGORY	A	B	C	D
RNP 0.30 DA		1502-1¾	511 (600-1¾)	

**AUTHORIZATION REQUIRED**

HIRL Rwy 3R-21L **1**  
 MIRL Rwy 16-34 and 3L-21R  
 REIL Rwy 3R