


LOC I-CDR 110.9	APP CRS 028°	Rwy Idg 5211
		TDZE 3294
		Apt Elev 3298

ILS or LOC RWY 3

CHADRON MUNI (CDR)

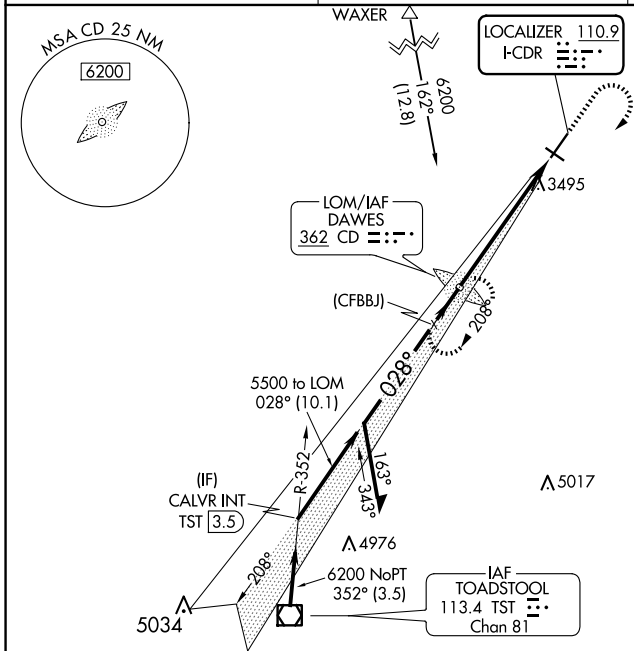
ADF required.

⚠ When local altimeter setting not received, use Pine Ridge altimeter setting and increase S-ILS 3 DA to 3564 feet; increase all MDAs 80 feet and S-LOC 3 visibility Cat C/D ¼ SM, and Circling visibility Cat B/C ⅓ SM. Inop table does not apply to S-ILS 3 all Cats, S-LOC 3 Cats A and B. For inop ALS, increase S-LOC 3 Cats C and D visibility to 1½ SM. When using Pine Ridge altimeter setting, inop table does not apply to S-ILS 3 all Cats, S-LOC 3 Cat A. For inop ALS when using Pine Ridge altimeter setting, increase S-LOC 3 Cat B visibility to 1¼ SM, Cats C and D visibility to 2 SM.

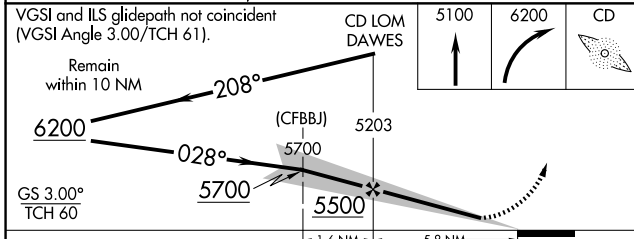
MALS 

MISSED APPROACH:
Climb to 5100 then climbing right turn to 6200 direct DAWES LOM and hold.

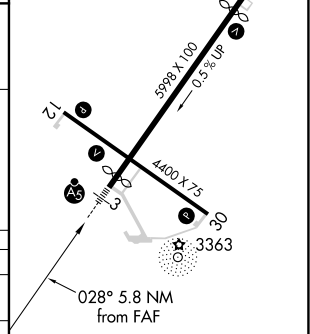
ASOS 118.05	DENVER CENTER 127.95 338.2	UNICOM 122.8 (CTAF) 1
-----------------------	--------------------------------------	---------------------------------



Altitude markers: 3868, 4169, 4575, 4700±, 5017, 5100, 6200.



ELEV 3298	D	TDZE 3294
REIL Rwy 21 and 30	1	
MIRL Rwy 12-30	1	
HIRL Rwy 3-21	1	



CATEGORY	A	B	C	D
S-ILS 3	3494-1 200 (200-1)			
S-LOC 3	3960-1	666 (700-1)	3960-1½	666 (700-1½)
CIRCLING	3960-1	662 (700-1)	3960-1⅞	4220-3 922 (1000-3)

FAF to MAP 5.8 NM					
Knots	60	90	120	150	180
Min:Sec	5:48	3:52	2:54	2:19	1:56

NC-2, 19 FEB 2026 to 19 MAR 2026

NC-2, 19 FEB 2026 to 19 MAR 2026