

APP CRS	Rwy Idg	4000
163°	TDZE	746
	Apt Elev	746

RNAV (GPS) RWY 16

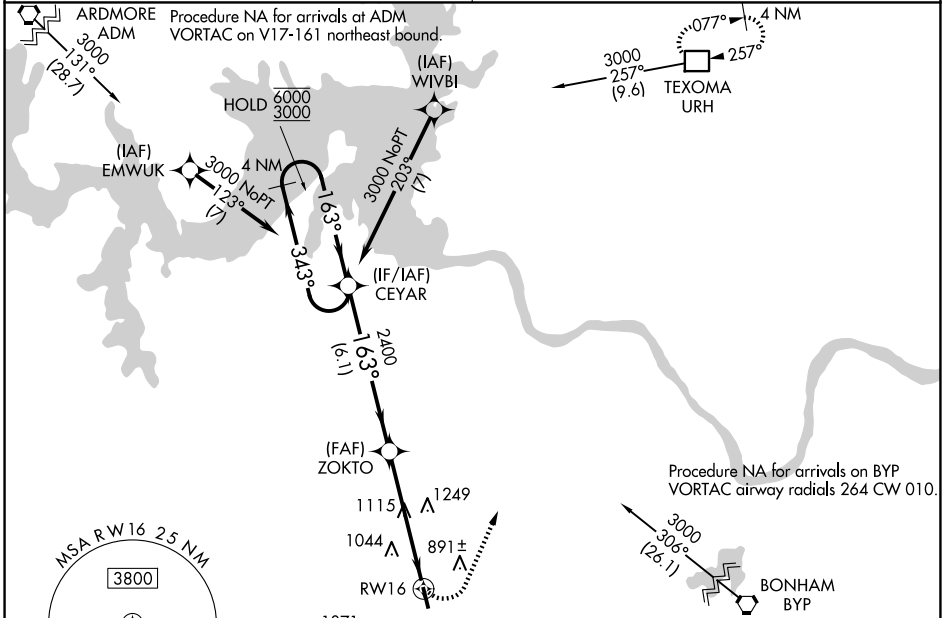
SHERMAN MUNI (SWI)

RNP APCH:
 Use Sherman/Denison altimeter setting, if not received use Dallas Love Fld altimeter setting and increase all MDA 140 feet and increase LNAV visibility Cat B ¼ SM, Cat C ½ SM, and increase Circling visibility Cats A/B ¼ SM, Cat C ½ SM.
 Procedure NA at night. Rwy 16 helicopter visibility reduction below 1 SM NA.

MISSED APPROACH:
 Climbing left turn to 3000 direct URH DME and hold.

FORT WORTH CENTER
124.75 323.0

UNICOM
122.8 (CTAF) 0



ELEV 746		TDZE 746	
4 NM Holding Pattern		CEYAR	ZOKTO
6000	← 343°		
3000	→ 163°		
		2400	3.00° TCH 45
			RWY 16
		6.1 NM	5.1 NM
CATEGORY	A	B	C
LNAV MDA	1440-1	694 (700-1)	1440-2 694 (700-2)
CIRCLING	1440-1	694 (700-1)	1620-2½ 874 (900-2½)
			D
			NA

SC-2, 19 FEB 2026 to 19 MAR 2026

SC-2, 19 FEB 2026 to 19 MAR 2026