

WAAS CH 63138 W13A	APP CRS 136°	Rwy ldg 3401 TDZE 754 Apt Elev 754
--	------------------------	---

RNAV (GPS) RWY 13

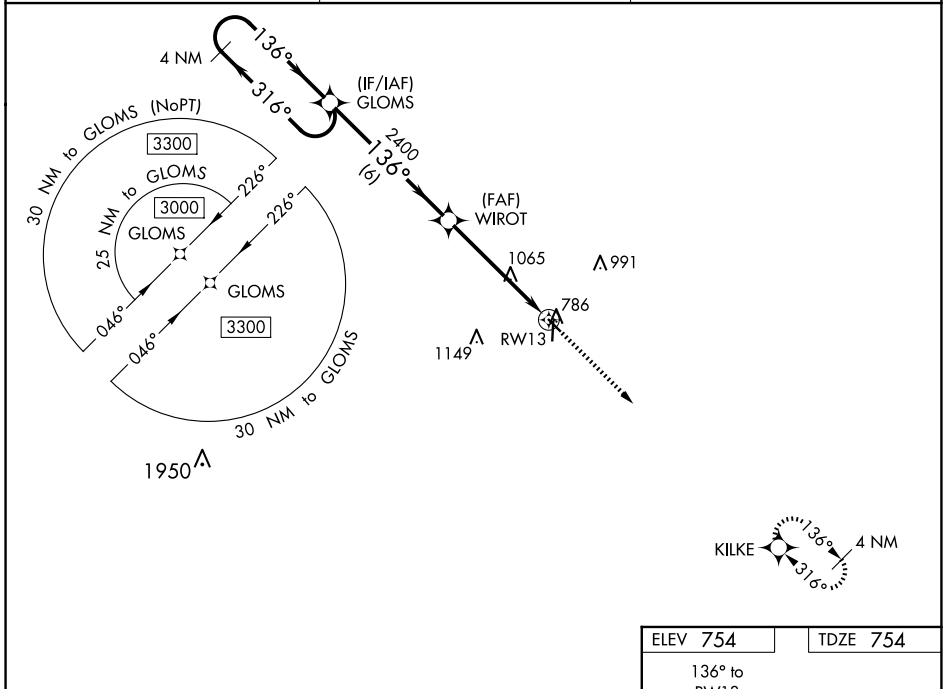
WASHINGTON MUNI (A WG)

RNP APCH.

▼ For uncompensated Baro-VNAV systems, LNAV/VNAV NA below -6°C (22°F) or above 54°C (130°F).
 ▲ Baro-VNAV and VDP NA when using Iowa City altimeter setting. When local altimeter setting not received, use Iowa City altimeter setting; increase LPV DA to 1066 feet, LNAV/VNAV DA to 1282 feet; increase all MDAs 80 feet and visibility LNAV and Circling Cat C ¼ SM.

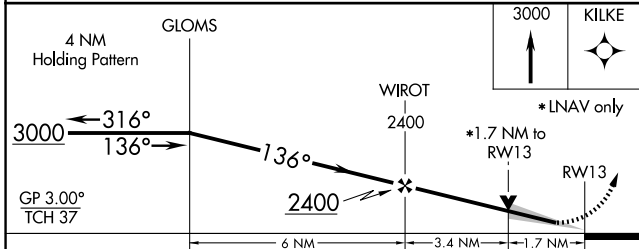
MISSED APPROACH:
 Climb to 3000 direct KILKE and hold.

AWOS-3 127.825	CHICAGO CENTER 135.6 370.95	UNICOM 122.7 (CTAF) 0
--------------------------	---------------------------------------	---------------------------------



NC-3, 19 FEB 2026 to 19 MAR 2026

NC-3, 19 FEB 2026 to 19 MAR 2026



ELEV 754	TDZE 754
----------	----------

The diagram shows the intersection of RWY 13 and RWY 36. RWY 13 is 136° to RWY 36. The distance from the intersection to RWY 13 is 81 ft. The distance from the intersection to RWY 36 is 4000 ft. The distance from the intersection to RWY 31 is 340 ft. The distance from the intersection to RWY 18 is 57 ft. The distance from the intersection to RWY 30 is 36 ft. The distance from the intersection to RWY 33 is 36 ft. The distance from the intersection to RWY 34 is 36 ft. The distance from the intersection to RWY 35 is 36 ft. The distance from the intersection to RWY 36 is 36 ft. The distance from the intersection to RWY 37 is 36 ft. The distance from the intersection to RWY 38 is 36 ft. The distance from the intersection to RWY 39 is 36 ft. The distance from the intersection to RWY 40 is 36 ft. The distance from the intersection to RWY 41 is 36 ft. The distance from the intersection to RWY 42 is 36 ft. The distance from the intersection to RWY 43 is 36 ft. The distance from the intersection to RWY 44 is 36 ft. The distance from the intersection to RWY 45 is 36 ft. The distance from the intersection to RWY 46 is 36 ft. The distance from the intersection to RWY 47 is 36 ft. The distance from the intersection to RWY 48 is 36 ft. The distance from the intersection to RWY 49 is 36 ft. The distance from the intersection to RWY 50 is 36 ft. The distance from the intersection to RWY 51 is 36 ft. The distance from the intersection to RWY 52 is 36 ft. The distance from the intersection to RWY 53 is 36 ft. The distance from the intersection to RWY 54 is 36 ft. The distance from the intersection to RWY 55 is 36 ft. The distance from the intersection to RWY 56 is 36 ft. The distance from the intersection to RWY 57 is 36 ft. The distance from the intersection to RWY 58 is 36 ft. The distance from the intersection to RWY 59 is 36 ft. The distance from the intersection to RWY 60 is 36 ft. The distance from the intersection to RWY 61 is 36 ft. The distance from the intersection to RWY 62 is 36 ft. The distance from the intersection to RWY 63 is 36 ft. The distance from the intersection to RWY 64 is 36 ft. The distance from the intersection to RWY 65 is 36 ft. The distance from the intersection to RWY 66 is 36 ft. The distance from the intersection to RWY 67 is 36 ft. The distance from the intersection to RWY 68 is 36 ft. The distance from the intersection to RWY 69 is 36 ft. The distance from the intersection to RWY 70 is 36 ft. The distance from the intersection to RWY 71 is 36 ft. The distance from the intersection to RWY 72 is 36 ft. The distance from the intersection to RWY 73 is 36 ft. The distance from the intersection to RWY 74 is 36 ft. The distance from the intersection to RWY 75 is 36 ft. The distance from the intersection to RWY 76 is 36 ft. The distance from the intersection to RWY 77 is 36 ft. The distance from the intersection to RWY 78 is 36 ft. The distance from the intersection to RWY 79 is 36 ft. The distance from the intersection to RWY 80 is 36 ft. The distance from the intersection to RWY 81 is 36 ft. The distance from the intersection to RWY 82 is 36 ft. The distance from the intersection to RWY 83 is 36 ft. The distance from the intersection to RWY 84 is 36 ft. The distance from the intersection to RWY 85 is 36 ft. The distance from the intersection to RWY 86 is 36 ft. The distance from the intersection to RWY 87 is 36 ft. The distance from the intersection to RWY 88 is 36 ft. The distance from the intersection to RWY 89 is 36 ft. The distance from the intersection to RWY 90 is 36 ft. The distance from the intersection to RWY 91 is 36 ft. The distance from the intersection to RWY 92 is 36 ft. The distance from the intersection to RWY 93 is 36 ft. The distance from the intersection to RWY 94 is 36 ft. The distance from the intersection to RWY 95 is 36 ft. The distance from the intersection to RWY 96 is 36 ft. The distance from the intersection to RWY 97 is 36 ft. The distance from the intersection to RWY 98 is 36 ft. The distance from the intersection to RWY 99 is 36 ft. The distance from the intersection to RWY 100 is 36 ft.

CATEGORY	A	B	C	D
LPV DA	1004-1 250 (300-1)			NA
LNAV/VNAV DA	1220-1 5/8 466 (500-1 5/8)			NA
LNAV MDA	1320-1 566 (600-1)	1320-1 5/8 566 (600-1 5/8)		NA
CIRCLING	1320-1 566 (600-1)	1500-2 1/4 746 (800-2 1/4)		NA