

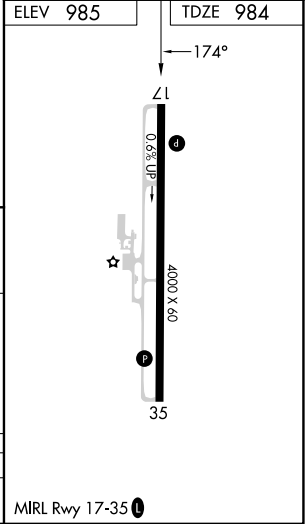
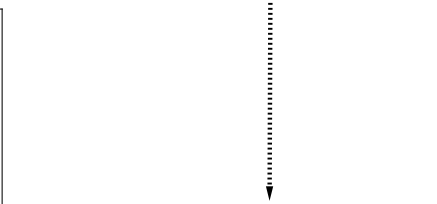
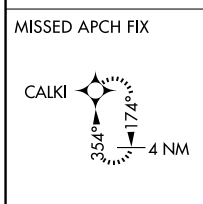
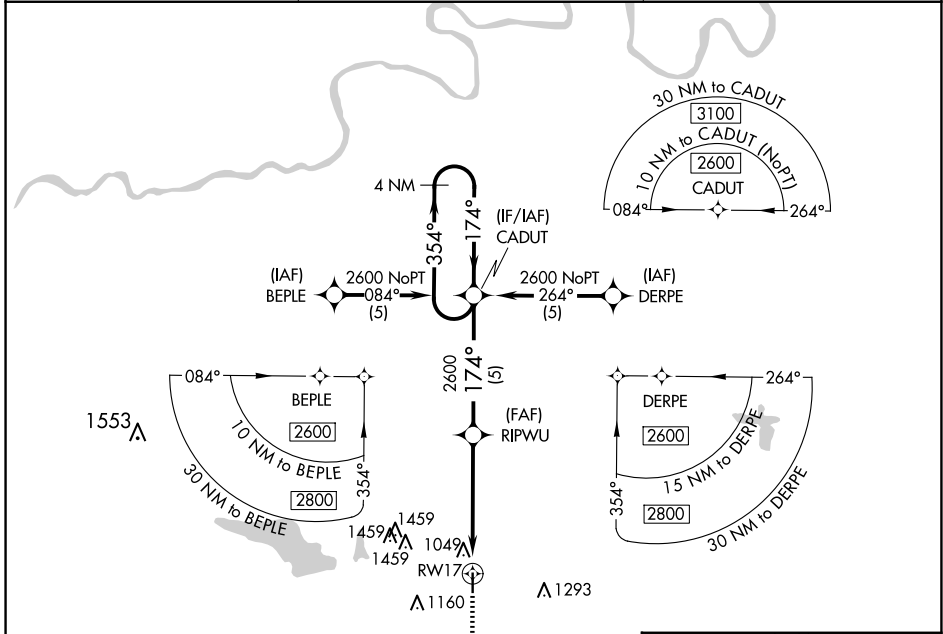
APP CRS	Rwy Idg	4000
174°	TDZE	984
	Apt Elev	985

RNAV (GPS) RWY 17

CHANDLER RGNL (CQB)

RNP APCH.	MISSED APPROACH: Climb to 2600 via 174° course to CALKI WP and hold.
<p>▽ When local altimeter setting not received, use Shawnee altimeter setting and increase all MDA 80 feet; increase LNAV Cat C visibility 1/8 SM.</p> <p>▲</p>	

AWOS-3PT 119.275	KANSAS CITY CENTER 127.8 319.1	CTAF 122.9
----------------------------	--	----------------------



4 NM Holding Pattern	CADUT	RIPWU	2600	CALKI
2600	2600	2600	174° crs	
354°	174°	3.00°		
5 NM	4 NM	1 NM		

CATEGORY	A	B	C	D
LNAV MDA	1300-1	316 (400-1)		NA

SC-1, 19 FEB 2026 to 19 MAR 2026

SC-1, 19 FEB 2026 to 19 MAR 2026