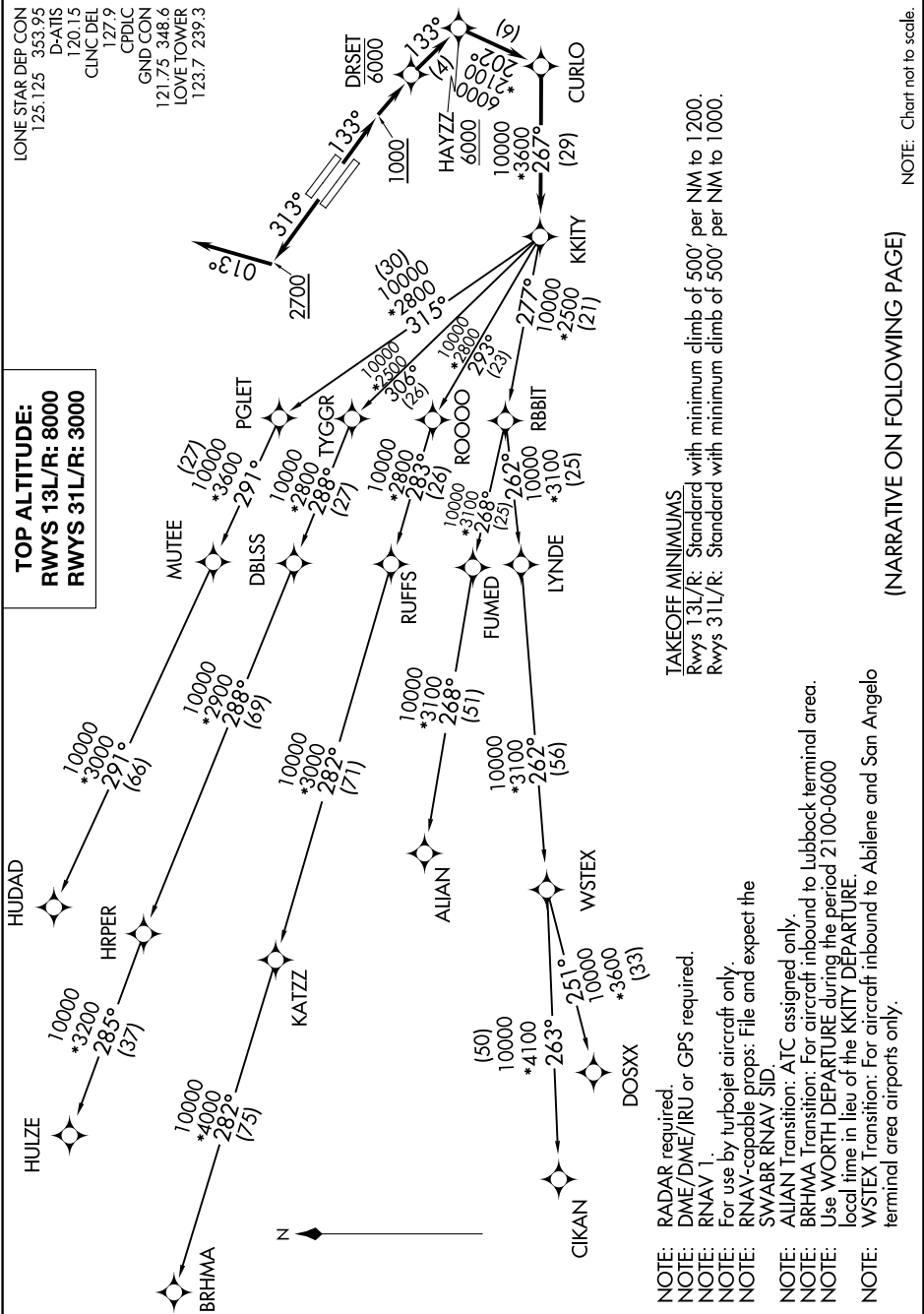


# KKITY FIVE DEPARTURE (RNAV)

LONE STAR DEP CON  
125.125 353.95  
D-ATIS  
120.15  
CLNCDEL  
127.9  
CPDIC  
GND CON  
121.75 348.6  
LOVE TOWER  
123.7 239.3

**TOP ALTITUDE:**  
RWYS 13L/R: 8000  
RWYS 31L/R: 3000



**TAKEOFF MINIMUMS**  
RWys 13L/R: Standard with minimum climb of 500' per NM to 1200.  
RWys 31L/R: Standard with minimum climb of 500' per NM to 1000.

- NOTE: RADAR required.
- NOTE: DME/DME/IRU or GPS required.
- NOTE: RNAV 1.
- NOTE: For use by turbojet aircraft only.
- NOTE: RNAV-capable props: File and expect the SWABR RNAV SID.
- NOTE: ALIAN Transition: ATC assigned only.
- NOTE: BRHMA Transition: For aircraft inbound to Lubbock terminal area.
- NOTE: Use WORTH DEPARTURE during the period 2100-0600 local time in lieu of the KKITY DEPARTURE.
- NOTE: WSTEX Transition: For aircraft inbound to Abilene and San Angelo terminal area airports only.

(NARRATIVE ON FOLLOWING PAGE)

NOTE: Chart not to scale.