

KUSSO TWO DEPARTURE (RNAV)

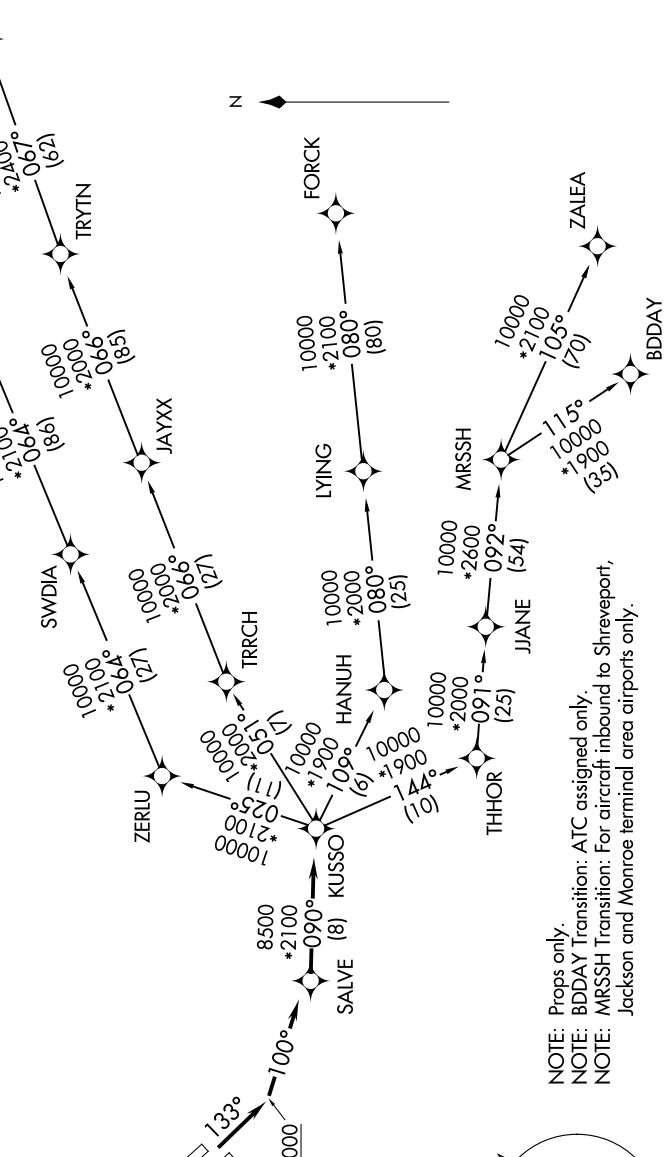
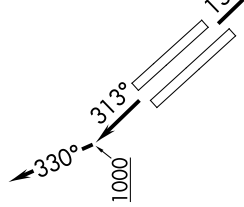
SC-2, 19 MAR 2026 to 16 APR 2026

TOP ALTITUDE:
RWYS 13L/R: 3000
RWYS 31L/R: 2000

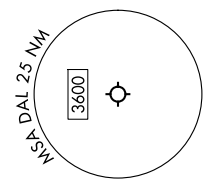
RNAV 1 - DME/DME/IRU or GPS.
RADAR required.

LONE STAR DEP CON
125.2 343.65 (13L/R)
124.3 282.275 (31L/R)
D-ATIS
120.15
CLNC DEL
127.9
CPDLC
GND CON
121.75 348.6
LOVE TOWER
123.7 239.3

TAKEOFF MINIMUMS
Rwys 13L/R: Standard with a minimum climb of 500' per NM to 1200.
Rwys 31L/R: Standard with a minimum climb of 500' per NM to 1000.



NOTE: Props only.
NOTE: BDDAY Transition: ATC assigned only.
NOTE: MRSSH Transition: For aircraft inbound to Shreveport, Jackson and Monroe terminal area airports only.



NOTE: Chart not to scale.

(CONTINUED ON FOLLOWING PAGE)

SC-2, 19 MAR 2026 to 16 APR 2026