

BOWIE EIGHT DEPARTURE

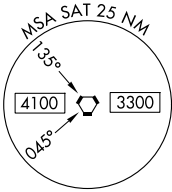
SAN ANTONIO DEP CON
 125.7 290.225 (Rwys 13, 22, 31)
 127.1 269.1 (Rwy 4 CORPUS CHRISTI Transition)
 125.1 307.0 (Rwy 4 LAREDO Transition)
 D-ATIS
 118.9
 CLNC DEL
 126.7
 CPDLC
 GND CON
 121.9 348.6
 SAN ANTONIO TOWER
 119.8 257.8

RADAR required.
 DME required.

**TOP ALTITUDE:
 5000**

SAN ANTONIO
 116.8 SAT
 Chan 115

TAKEOFF MINIMUMS
 Rwys 4, 13L/R, 22, 31L/R: Standard.

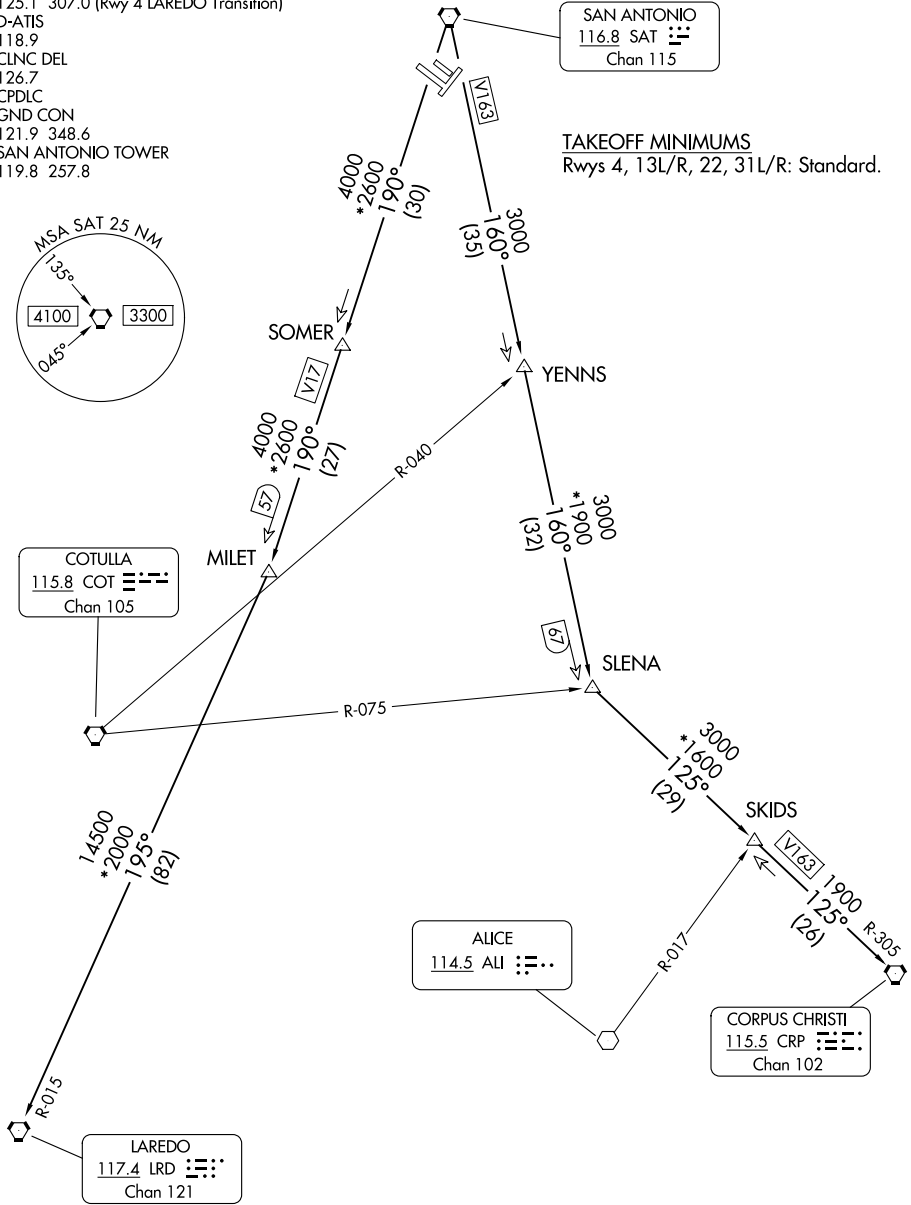


COTULLA
 115.8 COT
 Chan 105

ALICE
 114.5 ALI
 Chan 114

CORPUS CHRISTI
 115.5 CRP
 Chan 102

LAREDO
 117.4 LRD
 Chan 121



SC-3, 19 MAR 2026 to 16 APR 2026

SC-3, 19 MAR 2026 to 16 APR 2026

NOTE: Chart not to scale.

(CONTINUED ON FOLLOWING PAGE)

BOWIE EIGHT DEPARTURE