

ALEXANDRIA THREE DEPARTURE

SC-5, 19 MAR 2026 to 16 APR 2026

**TOP ALTITUDE:
ASSIGNED BY ATC**

- HOUSTON DEP CON
119.7 281.4
- ATIS
118.325
- CLNC DEL
120.45
- CLNC DEL
120.45
- 119.55 (When twr closed)
- GND CON
120.45
- CONROE TOWER ★
124.125 (CTAF)

LUFKIN
112.1 LFK
Chan 58

ALEXANDRIA
116.1 AEX
Chan 108

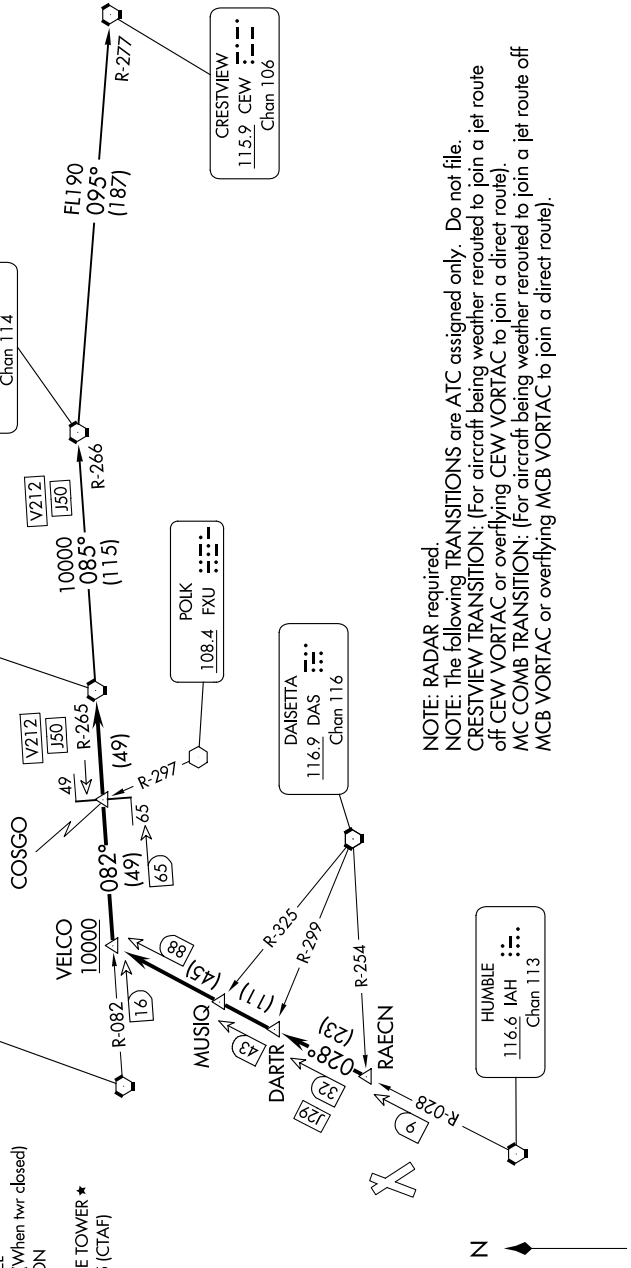
MC COMB
116.7 MCB
Chan 114

CRESTVIEW
115.9 CEW
Chan 106

DAISETTA
116.9 DAS
Chan 116

HUMBIE
116.6 IAH
Chan 113

TAKEOFF MINIMUMS
Rwys 1, 14, 19, 32: Standard.



NOTE: RADAR required
NOTE: The following TRANSITIONS are ATC assigned only. Do not file.
CRESTVIEW TRANSITION: (For aircraft being weather rerouted to join a jet route off CEW VORTAC or overflying CEW VORTAC to join a direct route).
MC COMB TRANSITION: (For aircraft being weather rerouted to join a jet route off MCB VORTAC or overflying MCB VORTAC to join a direct route).

(CONTINUED ON FOLLOWING PAGE)

SC-5, 19 MAR 2026 to 16 APR 2026

ALEXANDRIA THREE DEPARTURE

NOTE: Chart not to scale.