

KARR SEVEN DEPARTURE (RNAV)

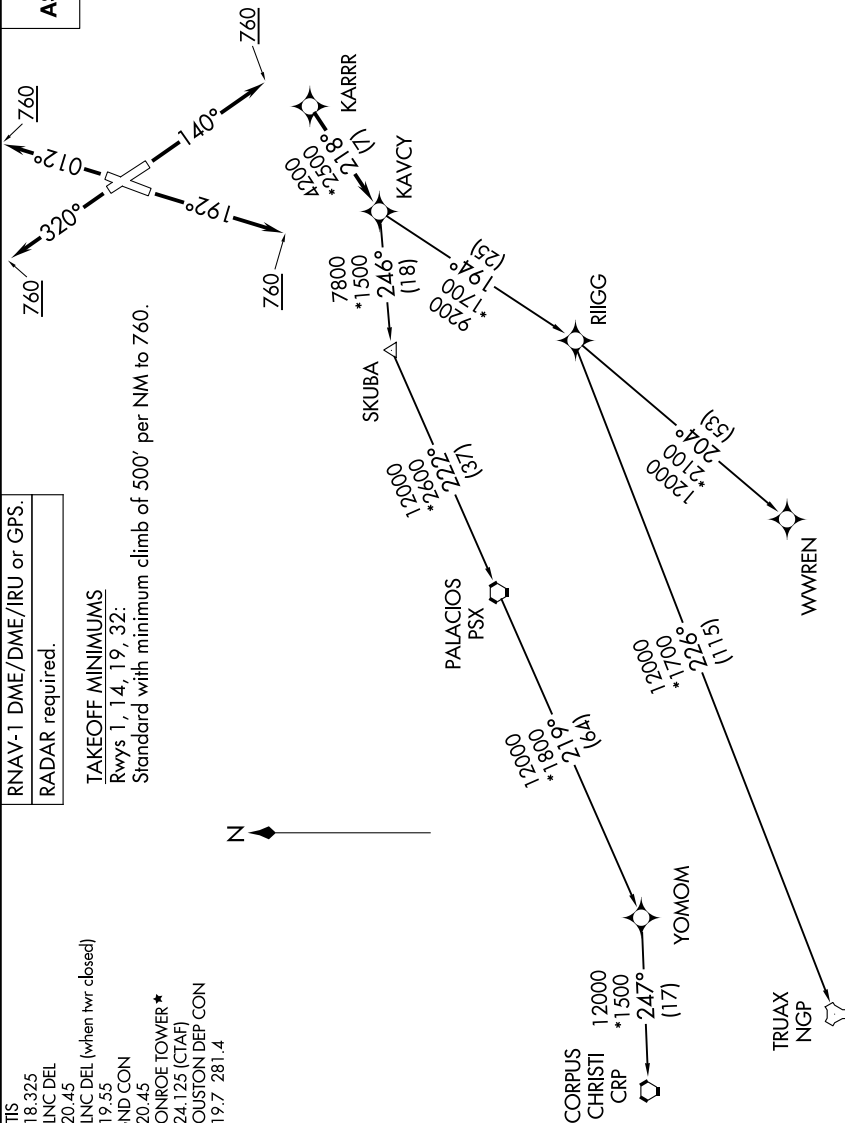
**TOP ALTITUDE:
ASSIGNED BY ATC**

RNAV-1 DME/DME/IRU or GPS.
RADAR required.

TAKEOFF MINIMUMS

Rwys 1, 14, 19, 32:
Standard with minimum climb of 500' per NM to 760.

ATIS 118.325
CLNC DEL 120.45
CLNC DEL (when hr closed) 119.55
GND CON 120.45
CONROE TOWER* 124.125 (CTAF)
HOUSTON DEP CON 119.7 281.4



NOTE: Chart not to scale.

(NARRATIVE ON FOLLOWING PAGE)

SC-5, 19 MAR 2026 to 16 APR 2026