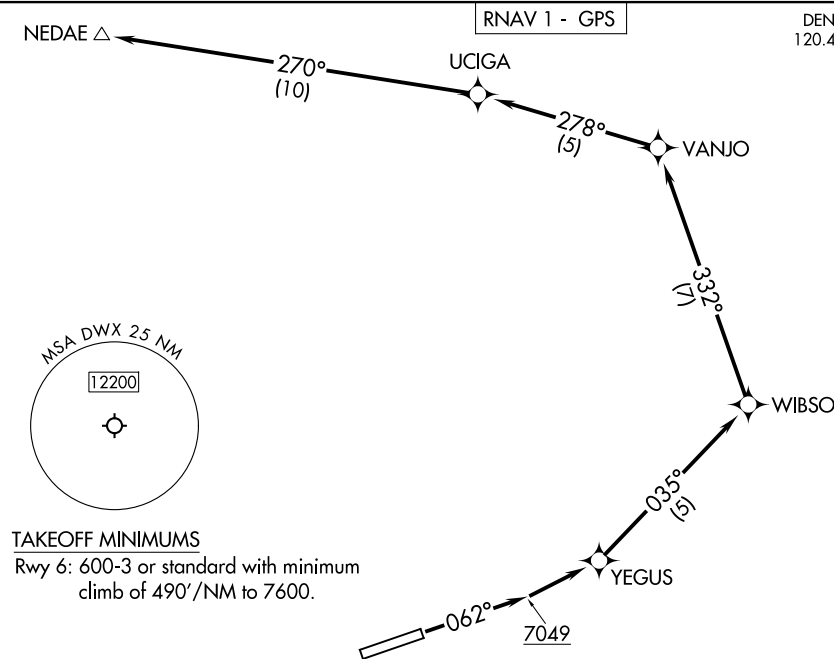


DENVER CENTER  
120.475 235.975  
AWOS-3PT  
119.425  
CTAF  
122.9



**TAKEOFF MINIMUMS**

Rwy 6: 600-3 or standard with minimum climb of 490'/NM to 7600.

**TAKEOFF OBSTACLE NOTES**

- Rwy 6: Fence, light poles, terrain beginning 47' from DER, 70' left of centerline, up to 12' AGL/6570' MSL
- Light poles 49' from DER, 77' right of centerline, 6553' MSL.
- Traverse way, terrain, fence beginning 125' from DER, 2' right of centerline, up to 6570' MSL.
- Traverse way beginning 339' from DER, 224' right of centerline, 6574' MSL.
- Traverse way, terrain, fence beginning 414' from DER, 1' right of centerline, up to 6576' MSL.
- Traverse way, terrain beginning 521' from DER, 107' left of centerline, up to 6575' MSL.
- Traverse way, terrain beginning 547' from DER, 92' left of centerline, up to 6582' MSL.
- Traverse way, terrain, vegetation beginning 697' from DER, 13' left of centerline, up to 6590' MSL.
- Fence 861' from DER, 254' right of centerline, 6' AGL/ 6577' MSL.
- Fence 913' from DER, 225' right of centerline, 8' AGL/ 6579' MSL.
- Vegetation, terrain beginning 1356' from DER, 322' left of centerline, up to 6594' MSL.
- Terrain beginning 1466' from DER, 558' left of centerline, up to 6597' MSL.
- Vegetation, terrain beginning 1651' from DER, 439' left of centerline, up to 6598' MSL.
- Terrain, fence, beginning 1710' from DER, 535' left of centerline, up to 6601' MSL.
- Vegetation, terrain beginning 1823' from DER, 155' left of centerline, up to 6602' MSL.
- Vegetation, terrain beginning 1908' from DER, 639' left of centerline, up to 6608' MSL.
- Vegetation, terrain beginning 2056' from DER, 680' left of centerline, up to 6610' MSL.
- Vegetation, terrain beginning 2280' from DER, 584' left of centerline, up to 6611' MSL.
- Terrain beginning 2365' from DER, 815' left of centerline, up to 6614' MSL.
- Vegetation beginning 2402' from DER, 935' left of centerline, up to 6618' MSL.

(NOTES CONTINUED ON FOLLOWING PAGE)

NOTE: Chart not to scale.

**DEPARTURE ROUTE DESCRIPTION**

**TAKEOFF RUNWAY 6:** Climb on heading 062° to 7049, then climb direct to YEGUS, then on depicted route to NEDAE, thence. . . .

. . . .expect filed altitude 10 minutes after departure.